



eSIS™
8.0.7 RELEASE NOTES
November 2005

New Forms	5
Introduction	6
Administration Functions:	7
Company File (Key) SYS001.FMX	7
GPA Tab.....	7
Diploma Type Maintenance SYS050.FMX	9
SAIS Student Year End Status STU560.FMX	12
User/Security	12
User Security SYS021.FMX	12
System Setup Utilities SETUP.FMX	12
SYS960.FMX Delete Student screen	12
System Codes	12
CS error.doc	12
CODESR_TA.doc.....	12
System Codes CODES.FMX.....	12
CODESP.FMX Print System Codes	13
CODESR_A.REP System Codes - Address Category	13
CODESR_F.REP System Codes - FARMS Category	13
CODESR_MR.REP System Codes - Mark Reporting Category	13
CODESR_M.REP System Codes - Miscellaneous Category	13
CODESR_A.REP System Codes - Address Category	14
CODESR_HI.REP System Codes - Home Instruction Category	14
CODESR_IA.REP System Codes - Injury/Accidents Category	14
CODESR_M.REP System Codes - Miscellaneous Category	14
CODESR_SP.REP System Codes - Special Education Category.....	14
CODESR_SF.REP System Codes - Staff Category	14
CODESR_ST.REP System Codes - Standardized Tests Category.....	14
CODESR_T.REP System Codes - Transfers Category.....	14
CODESR_TA.REP System Codes - Teacher Assistant/Co-Op Category	14
CODESR_MR.REP System Codes - Mark Reporting Category	15
CODESR_A.REP System Codes - Address Category	15
CODESR_C.REP System Codes - Courses Category	15
CODESR_M.REP System Codes - Miscellaneous Category	15
CODESP.FMX Print System Codes	15
CON_SCRL.FMX Letters Conversion Screen Utility	15
Address	15
Courses	16
Nurses	19
Miscellaneous.....	19
Adhoc Fields	19
Enter Ad-Hoc Fields ADH040.FMX	19
School:	20
School Information	20
School Details SYS040.FMX	20
School Information continued	22
Reporting Periods SCH100.FMX.....	22
SCH215.FMX Non-School Days.....	22
Room Maintenance SCH030.FMX	22
Teams/Groups	23
Mass Assignments	23
Course Information	23
SCH200.FMX Display Class List	23
Course Maintenance SCH050.FMX	23
Course Section Maintenance SCH070.FMX	23
Incident Reporting	24
Student Incident Summary STU190.FMX.....	24
Incident Victim Information STU199.FMX.....	24
Incident Detail STU196.FMX	24
Student Incident Details STU195.FMX	24
Nursing Information	25
Student Medications Detail SCH175.FMX.....	25

Immunization Fast Entry STU230.FMX	25
Mark Information	26
Mark Entry SCH133.FMX	26
Master Timetable Builder Start Screen MTBSTART.FMX	26
Course Conflict Summary MTB025.FMX.....	26
GPA Module.....	26
Review Calculated GPAs SCH104.FMX	26
GPA Module Option SCH330.FMX.....	26
School Reporting Dates SCH102.FMX.....	26
Review Calculated GPAs SCH104.FMX	26
GPA Type Criteria SCH103.FMX	26
GPA Type Criteria SCH103.FMX	27
Path: School > GPA Module > GPA Types Criteria	27
GPA Module Option SCH330.FMX.....	30
Review Calculated GPAs SCH104.FMX	30
GPA Module Option SCH330.FMX.....	31
Scheduling Utilities.....	32
Class Transfer SCH015.FMX	32
Mass Updates	32
MAS010.FMX Mass Update Single Value	32
MAS020.FMX Mass Update Multi Value	32
MAS030.FMX Mass Add Into SPED.....	32
MAS040.FMX Mass Update Diploma Dates.....	32
MAS050.FMX Transfer Students from Holding District.....	32
Mass Exemption of Immunization Series MAS060.FMX	32
Parent Assistant.....	33
Parent Assistant - Create User/Parent Interface PI010.FMX.....	33
Common View:.....	33
Basic Student Demographics STU105.FMX.....	33
Student Course Selections STU541.FMX	34
Credit Detail STU160.FMX	35
Student Credit/Credit Marks Detail STU164.FMX	35
S28276.....	36
Student Diploma Screen STU552.FMX	37
Analyze Diploma STU555.FMX.....	37
Career Development Modeling STU554.FMX	37
Student Diploma Screen STU552.FMX	41
Parent Information STU115.FMX.....	42
Medical/Health Information	42
Other Health Factors STU129.FMX.....	42
Programs	42
Regular and Special Ed. Program Availability SCH049.FMX	42
Path: Common View > Programs > Student Program Assignment > Available Programs.....	42
Main Menu:.....	43
Change Student.....	43
Programs.....	43
Student Test History STU645.FMX	43
Admission/Withdraw Maintenance STU030.FMX	43
Withdraw Student STU170.FMX.....	44
Reports	45
General Reports	45
Client Specific Reports	54
Attendance	73
ATT005.FMX Daily Attendance - Class Entry	73
ATT025.FMX Daily Attendance - Homeroom Class Entry	73
ATT100.FMX Period Attendance - Mass Entry.....	73
ATT060.FMX Daily/Period Attendance - School Closings Entry	74
ATT120.FMX Period/Days Attendance Summaries	74
ATT140.FMX Period Attendance - Team/Club Entry.....	74
ATT405.FMX Attendance Scanner Interface	74
ATT405.FMX Attendance Scanner Interface	74
SYS915.FMX IAM Attendance Import/Export	74

Teacher Assistant Module.....75

FARMS Advanced Module.....76

FARM12.FMX FARMS Applications Detail (Lite).....76

FARM180R.REP FARMS Notification Letters.....76

Special Education Advanced.....77

Special Education Late.....77

 SED180.FMX Letter Selection.....77

 SED900.FMX Special Education Lite.....77

Special Education Advanced.....78

 SEW400.FMX Eligibility.....78

 SEW410.FMX Eligibility Detail-Autism Spectrum Disorder.....78

 SEW411.FMX Statement of Eligibility-Speech/Lang Impairment.....78

 SEW412.FMX Statement of Eligibility-Deaf/Blindness.....78

 SEW413.FMX Statement of Eligibility-Emotional Disturbance.....78

 SEW414.FMX Statement of Eligibility-Hearing Impairment.....78

 SEW415.FMX Statement of Eligibility-Specific Learning Disability.....78

 SEW416.FMX Statement of Eligibility-Mental Retardation.....78

 SEW417.FMX Statement of Eligibility-Other Health Impairment.....78

 SEW418.FMX Statement of Eligibility-Orthopedic Impairment.....78

 SEW419.FMX Statement of Eligibility-Traumatic Brain Injury.....78

 SEW420.FMX Statement of Eligibility-Visual Impairment.....78

 SEW410P.FMX Eligibility Detail-Autism-Spectrum Disorder.....78

 SEW410R.REP Eligibility Detail-Autism-Spectrum Disorder.....78

 SEW411R.REP Statement of Eligibility-Speech/Lang Impairment.....78

 SEW412R.REP Statement of Eligibility-Deaf/Blindness.....78

 SEW413R.REP Statement of Eligibility-Emotional Disturbance.....78

 SEW414R.REP Statement of Eligibility-Hearing Impairment.....78

 SEW415R.REP Statement of Eligibility-Specific Learn Disability.....78

 SEW416R.REP Statement of Eligibility-Mental Retardation.....78

 SEW417R.REP Statement of Eligibility-Specific Learn Disability.....78

 SEW418R.REP Statement of Eligibility-Orthopedic Impairment.....78

 SEW419R.REP Statement of Eligibility-Traumatic Brain Injury.....78

 SEW420R.REP Statement of Eligibility-Visual Impairment.....78

 SEW504.FMX Process Management Timelines.....78

Appendix A – GPA Calculation after Quarter 3.....79

 Allow multiple marks to be included in GPA calculation for the same course length.....79

 Setting up a Report Date with Multiple Reporting Periods for the Same Course Length on SCH102.....82

 Running “Cumulative including Courses in Progress” GPA for Reporting Date with Multiple Reporting Periods for the same course length.....83

 School Reporting Dates Changes (SCH102).....84

 GPA Calculations (SCH104).....84

 Messages.....85

Index.....86

New Forms

This section lists the program numbers and names of forms and reports created since eSIS Release #8.06. Please review your specific Security User Roles and various Report Groups to determine which roles should have access.

STU554.FMX Career Development Modeling – new View
SEWOR66.FMX Oregon IEP - SECC Supplementary Data
SEWOR91.FMX SECC Supplemental Data - Serving Agency Codes
SEWOR92.FMX SECC Supplemental Data - Enrollment Type Codes
SRWA548P.FMX SRWA - New Transcript
SRWA548R.REP SRWA - New Transcript

Introduction

This Release Note document is broken into four major parts: Administration Functions, School Functions, Common View and Main Menu. Within each of these areas, each of the menu items is listed in the order that they appear in eSIS. This should make your flow through eSIS, while reviewing/testing the release notes, much easier. To make it even easier, we have also included a path on how to access each form.

When an enhancement touches multiple forms, you will see the SCR listed in different areas of the document for each form. The 'main' release note will be found under the section/form that prompted the enhancement. The associated forms will briefly describe the change but will refer you to the 'main' form that was changed.

For each form, we identify what "Enhancements" were added and what "Bugs" were fixed. This way you only have one pass through eSIS when working with the Release Note document. In the Reports section which is under the Main Menu, the General Client Reports are listed first, followed by Client Specific Reports.

If there is anything else that you think we could do to make the flow better, please let us know.

Administration Functions:

Company File (Key) SYS001.FMX

Path: Administration > Company File

Enhancements

GPA Tab

SCR24663

An enhancement has been made to the GPA module to allow a special GPA calculation after Quarter 3 (interim marks) have been posted. It allows multiple marks from the same course length to be weighted and included in the Cumulative GPA - including Courses in Progress calculations in the GPA module.

On the Company File, a GPA Module tab was added. A user can either default or lock the “Allow Multiple Marks to be included in the GPA Calculation for the same course length” option selected on the Company File to the School Level. If it is defaulted to the school level, a user can update the “Allow Multiple Marks to be included in the GPA Calculation for the same course length” option in School Details. If it is locked to the school level, a user can only view the “Allow Multiple Marks to be included in the GPA Calculation for the same course length” option in School Details.

- Users are able to assign multiple reporting periods of the same course length as Alternate Finals to a single reporting date if the option is set to Yes in School Details.
- Users are able to run the Cumulative including Courses in Progress GPA Calculation for a reporting date that contains multiple reporting periods of the same course length that are set as Alternate Finals.

See Appendix A – GPA Calculation after Quarter 3 for more information.

SCR27523

An enhancement has been made to allow you to decide whether or not you would like to include non-final marks from cross-enrolled courses to be included when calculating “Cumulative GPA including Courses in Progress”. It will also allow the users to select the weight to be used in the calculations for the cross-enrolled courses.

On the Company File, a GPA Module tab was added. You can either default or lock the “Allow non-final marks from cross-enrolled courses to be included in a GPA for “Cumulative including Courses in Progress” GPA Type Calculation” option selected on the Company File to the School Level.

If the Company File “Allow non-final marks from cross-enrolled courses to be included in GPA for “Cumulative including Courses in Progress” GPA Type Calculation” option is defaulted to the School Level, then a user can update the “Allow non-final marks from cross-enrolled courses to be included in GPA for “Cumulative including Courses in Progress” GPA Type Calculation” option in School Details.

If the Company File “Allow non-final marks from cross-enrolled courses to be included in GPA for “Cumulative including Courses in Progress” GPA Type Calculation” option is locked to the school level, then a user can only view the “Allow non-final marks from cross-enrolled courses to be included in GPA for “Cumulative including Courses in Progress” GPA Type Calculation” option in School Details.

You will be able to decide whether or not to include non-final marks for cross-enrolled courses in the Cumulative GPA including Courses in Progress calculations on SCH104, if the option is set to Yes in School Details.

You will be able to specify the weight to be used for non-final marks from cross-enrolled courses in the Cumulative GPA including Courses in Progress calculations on SCH104 if the option to “Include non-final marks for cross-enrolled courses” is turned on.

SCR26237

An option was added to eSIS to allow a user to decide whether the GPA should be truncated or rounded to the 4th decimal and stored in eSIS.

The previous functionality rounded and stored the calculated GPA for a student to the 4th decimal. eSIS can now truncate and store the calculated GPA for a student to the 4th decimal in order to eliminate “double-rounding” of a student’s GPA because on the Secondary Report Card and on the Secondary VISI Labels, the stored GPA is rounded to the 3rd decimal.

Raw Score	Truncate Option		Round Option	
	Truncate/Store 4 Decimals in eSIS	Round to 3 Decimals on Report Card	Round/Store 4 Decimals in eSIS	Round to 3 Decimals on Report Card
2.90005	2.9000	2.900	2.9001	2.900
2.99945	2.9994	2.999	2.9995	3.000
2.99955	2.9995	3.000	2.9996	3.000
3.50045	3.5004	3.500	3.5005	3.501
3.04545	3.0454	3.045	3.0455	3.046

Indicate on the GPA tab of the Company file that you want to:

- **Truncate – Lock** – which will force all schools associated to the company key to use the Truncated GPA Calculation Option.
- **Truncate – Default** – which will default all schools associate to the company key to use the Truncated GPA Calculation Option but the schools will have the authority to override the Company Option in School Details.
- **Round – Lock** - which will force all schools associated to the company key to use the Rounded GPA Calculation Option.
- **Round – Default** – which will default all schools associate to the company key to use the Rounded GPA Calculation Option but the schools will have the authority to override the Company Option in School Details.

On the More School Details screen, select the new GPA Options button. The following options are available from the Truncate or Round GPA to the 4th Decimal Option field:

- If the `SCHOOLS.GPA_TRUNC_OR_ROUND_IND = 'TL'`, then displays “Truncate” in the list item BUT the field is disabled.
- If the `SCHOOLS.GPA_TRUNC_OR_ROUND_IND = 'TD'`, then displays “Truncate” in the list item AND the field is enabled.
- If the user changes the option from “Truncate” to “Round” and SAVES, then set `SCHOOLS.GPA_TRUNC_OR_ROUND_IND = 'RD'`.
- If the `SCHOOLS.GPA_TRUNC_OR_ROUND_IND = 'RL'`, then displays “Round” in the list item BUT the field is disabled.
- If the `SCHOOLS.GPA_TRUNC_OR_ROUND_IND = 'RD'`, then displays “Round” in the list item AND the field is enabled.
- If the user changes the option from “Round” to “Truncate” and SAVES, then sets `SCHOOLS.GPA_TRUNC_OR_ROUND_IND = 'TD'`.

Diploma Type Maintenance SYS050.FMX

Path: Administration > Diplomas > Diploma Type

Enhancements

SCR32103

Previously when using Diploma Copy functionality, it did not create Unique IDs for the Diploma Categories, It simply used the same ID field from the Diploma it was copied from. Now when using Diploma Copy functionality, it will create Unique IDs for the copied Diploma Categories.

SCR26312

A new feature was added to the Diploma Type Maintenance screen, to allow a user to define a number of credits for a specific grade required for the diploma. This means that in addition to the total number of credits required for a diploma, a district may specify that a certain number of those total credits must be earned at a particular grade level.

These total credits required for the specified grade can come from required credits, elective credits, or from both areas.

As a result eSIS will total the number of credits earned in the selected grade and display the results in the Student Diploma screen, STU552.

The following changes have been made for this enhancement:

- Added the ability to create a rule for total credits required for a specified grade in the set-up of Diploma Types.
- A new 'Define' button has been added next to the 'Required' field on the Diploma Type Maintenance screen, SYS050. This button will display a canvas identical to the existing one for the grade elective credits.
- User will be able to create a general rule by selecting the grade for which the credits are required, the number of credits required for the grade, and whether the count include vocational credits.
- Since these total credits required for the specified grade can come from compulsory credits, optional credits, or from both areas, eSIS will sum the number of credits earned in the selected grade and display the results in the Student Diploma screen, STU552, right after the 'Other' categories, separated by a blank row.
- The new 'General' credits diploma requirement will also be reflected on the Student Diploma Summary report, STU552R, displaying in the Credit Summary block, right below the 'Other' categories.
- When a new diploma is copied from an existing one, the credit requirements by grade will be copied over to the new diploma as well.
- When a diploma type has 'Electives by Grade Requirements' set-ups in SYS050, the algorithm has been modified to satisfy those grade levels with the least amount of elective credits first when determining where credits should be allocated during the analysis of diploma. The algorithm will then go through courses in the order of highest credit and highest mark to fill categories.

Diploma Type Maintenance - General Requirements by Grade canvas

Path: Administration > Diplomas > Diploma Type > Required field > Define button

Field Name	Description
Grade	The course grade level. Displays the list of grades as created in System Codes, Grades table
No of Credits	The number of credits required for the selected grade. Enter a credit value up to 999.99.
Exclude Vocational	Indicate whether the credits requirements exclude vocational credits in the count. When checked, vocational credits are excluded in the count towards the number of credits required for the grade. When unchecked, they are included.
Add button	Add another record. When pressed, activates the next blank row and place cursor in 'Grade' field
Del button	When pressed, deletes the selected record.
Back Arrow button	Returns to Diploma Type Maintenance screen, SYS050.

STU552.FMX Student Diploma Screen

Path: Common View > Diploma or Diploma button on Start Screen

The number of credits required, by grade, will display on the Diploma screen along with any credits earned, and remaining, at the end of the diploma summary (right after the 'Other' categories).

<i>Curr</i>	<i>Pot</i>	<i>Fut</i>	<i>Req'd</i>	<i>Earn/Waive</i>	<i>Needed</i>
For Diploma			80.000	0.000	80.000
Compulsory			48.000	0.000	48.000
Optional			28.000	0.000	28.000
Eng					
Mat					
Other					
Grade 10 Elective Credits					
Grade 12 Credits			16.00	0.00	16.00
Vocational					

This information would be available for the three views – Current, Potential, and Future.

If there are no 'General' rules for the student's diploma, the credits required by grade will not display in the diploma summary.

STU552R.Rep Student Diploma Summary report

Path: Common View > Diploma > Print Icon or Diploma button on Start Screen > Print button

The credit requirements by grade will display in the Credit Summary block on the report, right below the 'Other' categories (separated by a blank row).

**Credits Summary			
	Req'd	Earn/Waive	Needed
For Diploma	80.000	0.000	80.000
Compulsory	48.000	0.000	48.000
Optional	28.000	0.000	28.888
Eng			
Mat			
Other			
Grade 10 Elective Credits			
Grade 12 Credits	16.00	0.00	16.00
Vocational			

Diploma Algorithm

The current diploma algorithm goes through a series of steps in order to determine where the credits earned should be allocated or where they are the best fit.

When the diploma has elective requirements by grade, the algorithm is modified in two areas to incorporate the 'elective' rules:

Allocation of primaries

During this step [where all the credit records with only one primary diploma category (that are not manual-overrides) are handled], the credit records that can satisfy a primary category are sorted by those grades with elective credit requirements – from no elective credits required to the most. Once the records have been sorted, the record is further sorted by the credit value of the course and then by the mark earned for the course (current function). The algorithm then goes through the credit records and begins to assign credits to diploma categories. This process continues until all primaries are assigned.

Best Fit

During this step, where the algorithm identifies all the remaining unfilled categories and identifies those that will be the hardest to satisfy – those with the lowest category weight get handled first), once the remaining categories and credit records are identified, the credit records are sorted by those grades with elective credit requirements – from least amount of credits to most. The algorithm then goes through the records and determines the category weights and proceeds with its current function (goes through all the primary and alternate diploma categories for each credit record, by grade, until no other matches can be made). This process is repeated for each grade with the goal of having as many diploma categories satisfied by the grades that do not require elective credits.

Note: If the diploma does not have 'elective rules', then the diploma algorithm remains unchanged (current eSIS function).

New column on DIPLOMA_GRADE_CREDITS table

A new column was added to the DIPLOMA_GRADE_CREDITS table that is used to indicate whether the requirements entered for the diploma are elective requirements or general requirements. The table currently holds only elective requirements hence the default value of 'E' for the new column (which updates all existing records, as well as defaults new records to elective, if not otherwise indicated).

Bug**SCR32103 (AEA604)****CRM Case No.1-13056**

Previously when using the Diploma Copy functionality, it did not create Unique IDs for the Diploma Categories. It simply used the same ID field from the Diploma it was copied from. Now when using Diploma Copy functionality, it will create Unique IDs for the copied Diploma Categories.

SAIS Student Year End Status STU560.FMX**Bug****SCR32328**

A10G Oracle form error is no longer generated on Entry into STU560.

User/Security**Bugs****User Security SYS021.FMX**

Path: Administration > Users/Security > User Security

SCR31988

- A school user can now only query or access the users that show in User Maintenance (SYS015) or school users for the same school.
- A central office user can now only query or access the users that show in User Maintenance (SYS015) or the users that are within the same district.

SCR31310 (usd 36512)**CRM Case No.1-11511**

Now, on the User Security screen, a central office user is not able to query for a user or school that is outside of the current user's district.

System Setup Utilities SETUP.FMX**SYS960.FMX Delete Student screen**

Path: Administration > System Setup Utilities > Delete a Student button

Enhancement**SCR28535**

A Course Designator (for student's academic record) was added to enter information pertaining to how a course is taken and a credit is earned. It appears on various forms and reports and can be enforced at the school and student level. See SYS266.FMX Standard Course Detail in this document.

System Codes

Path: Administration > System Codes

CS error.doc**CODESR_TA.doc****System Codes CODES.FMX****Bug****SCR29180**

Previously, when a user pressed the Curriculum Standards button on the System Codes screen, the Curriculum Standards screen (SYS999) would display. Now, when pressing the Curriculum Standards button on the System Codes screen, the Curriculum Models screen (SYS993) displays. In addition, when checking the Curriculum Standards checkbox and pressing the print button on the Print System Codes screen, the report will display the system codes as seen on the Curriculum Models screen (SYS993).

CODESP.FMX Print System Codes

Bugs

SCR29170

Logic was modified to ensure the user would be able to select the Supplemental Aids checkbox without any other code tables checked to generate a report.

SCR31465 (BZ #2518)

CRM Case No.1-11788

Logic was modified to ensure that if the code table categories are changed when viewing the Code Table Print screen no characters remain on the screen from the previous category.

SCR29119

Previously when attempting to print the report CODESR_M for Reasons For No Internet Access (SYS281), a blank report was produced. Now, the report prints, displaying data from SYS281.

CODESR_A.REP System Codes - Address Category

SCR29033

This report has been modified to correct the following:

When printing for Country (SYS380), the headers External and External (Alpha) now display on the second page of printing.

The Description column has been expanded to fully display contents when printing for Country (SYS380), Invalid Address Reason (SYS382), Non District Transportation (SYS161).

The External Code column has been expanded to fully display contents when printing for Dwelling Type (SYS440).

When printing for Special Address Codes (SYS152), lower case letters that hang (e.g. g, j, p, q y) are no longer cut off.

CODESR_F.REP System Codes - FARMS Category

SCR29065

Logic was modified to ensure that all codes in the FARMS Approval Type Code table are displayed on the FARMS system code report.

SCR29069

Logic was modified to ensure that the report sorted the data by Date ID and then Family size.

CODESR_MR.REP System Codes - Mark Reporting Category

SCR29102

Logic was added to ensure that the Narrative field in the system code table was displayed in full when printing the system code report.

CODESR_M.REP System Codes - Miscellaneous Category

SCR29116

Logic was corrected to ensure that if the description for the code table could not fit on one line, when printed in the report, it would wrap to the next line not the next page.

CODESR_A.REP System Codes - Address Category

CODESR_HI.REP System Codes - Home Instruction Category

CODESR_IA.REP System Codes - Injury/Accidents Category

CODESR_M.REP System Codes - Miscellaneous Category

CODESR_SP.REP System Codes - Special Education Category

CODESR_SF.REP System Codes - Staff Category

CODESR_ST.REP System Codes - Standardized Tests Category

CODESR_T.REP System Codes - Transfers Category

CODESR_TA.REP System Codes - Teacher Assistant/Co-Op Category

SCR29035

The following System Codes Reports have been modified as previously some report columns were not wide enough to display all data in corresponding fields in System Codes.

CODESR_A - This report has been modified to correct the following:

- The Description column has been expanded to fully display contents when printing for Country (SYS380), Invalid Address Reason (SYS382), Non District Transportation (SYS161).
- The External Code column has been expanded to fully display contents when printing for Dwelling Type (SYS440).
- When printing for Special Address Codes (SYS152), lower case letters that hang (e.g. g, j, p, q y) are no longer cut off.

CODESR_HI - The Description column has been expanded to fully display contents when printing for HIM002 (Home Instruction Review).

CODESR_IA - The Description column has been expanded to fully display contents when printing for SYS620 (Injury/Accident Types) and SYS946 (Interscholastic Activities).

CODESR_M - Previously, when the report was printed for Employers (SYS656), the External Code and Street Name column was cutting off the information. Now, the report columns are wide enough to fully display information for SYS656 (Employers)

CODESR_SP - The Description column has been expanded to fully display contents when printing for Eligibility (SED390), Least Restrictive Environment (SED395), Special Services (SED393), SPED Alternate Assessment (SED398), SPED Referral Reason (SED397) and SPED Referral Status (SED396).

CODESR_SF - The Description column has been expanded to fully display contents when printing for Teacher Unavailability (SYS241)

CODESR_ST - The Description column has been expanded to fully display contents when printing for Status (SYS256), Exemption Types (SYS465), Level Types (SYS271), Methods (SYS257)

CODESR_T - The Transfer Type and Step Category columns have been expanded to fully display contents when printing for Authorization Review Steps (SYS575). The Description column has been expanded to fully display contents when printing for Transfer Step Categories (SYS570)

CODESR_TA - The Title, Publisher and Subject Area columns have been expanded to fully display contents when printing for Text Book (SYS198)

CODESR_MR.REP System Codes - Mark Reporting Category

CODESR_A.REP System Codes - Address Category

CODESR_C.REP System Codes - Courses Category

CODESR_M.REP System Codes - Miscellaneous Category

CODESP.FMX Print System Codes

SCR29032

The logic was modified to ensure that the data present in the code table was displayed on the system code report.

CON_SCRL.FMX Letters Conversion Screen Utility

SCR32640

Now, on 10G, when accessing the Letter Conversion Utility screen (CON_SCRL), all of the appropriate Enterprise letters will display on the screen and when pressing the exit icon, the screen will close.

Address

Path: Administration > System Codes > Address

Valid Address Maintenance SYS155.FMX

Bugs

SCR30459 (ICR00000081)

CRM Case No.1-10616

- Previously if a user entered a new Address but did not associate a catchment to the address, the address could not be added on the Valid Address Maintenance screen (SYS155). Now it is added correctly.
- An Oracle error is no longer generated after running a query for an individual address, clicking on Details for it, exiting the Details screen then exiting SYS155.

Valid Address Details SYS156.FMX

SCR30526

CRM Case No.1-10889

Previously when adding a new record on the Valid Addresses screen without a catchment, it allowed it to be saved, but did not display it on Valid Addresses Maintenance screen as the existing address. On the Detail screen sSIS did not allow a user to add and save a new address without a catchment.

Now user can add a new address without a catchment on Valid Addresses Maintenance and Valid Addresses Details screen, and the record will be displayed.

Courses

Path: Administration > System Codes > Courses

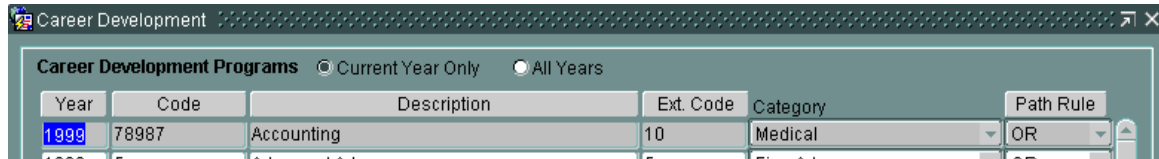
Career Development SYS660.FMX

Enhancement

SCR22396

A Path Rule has been added to this screen so you can choose AND or OR for the Career Development Program (CDP) path.

- If AND is chosen, all associated paths for a CDP must be fulfilled to meet the requirements.
- If OR is chosen, fulfilling any one of the associated paths will meet the requirements.



Standard Course Codes SYS265.FMX

Standard Course Detail SYS266.FMX

Enhancements

SCR28535

A new field called Course Designator was added to enter information pertaining to how a course is taken and a credit is earned. It appears on various forms and reports and can be enforced at the school and student level.

Districts in Washington State required a Course Designator for a student's academic record. The Course Designator refers to courses which are categorized as:

Code	Description
R	Running Start
A	Advanced Placement
C	College in the High School
I	International Baccalaureate
T	Tech Prep
B	HEC (Higher Education Coordinating) Board Requirement
H	Honors

The following is a list of items that will be included in this change:

File Name OR Form Desc. OR Report Name OR Program Description	Description
SYS266 (Standard Courses (ministry_course_codes)) SCH050 (Course Maintenance (courses)) STU541 (Student Course Selections (course_selections)) STU160 (Credit Details (credits)) STU164 (Student Credit - Credit Marks Detail (credits))	Course designator was added.
SYS265/SYS266 (Standard Courses)	Course designator was added. Included in process that pushes changes down to the District and School Levels, Course designator was added to the list of enforced fields.
SCH050 (School Courses)	Course designator was added. Course designator was added to the list of enforced fields.
SCH420R (Course Description Verification Report)	Course designator was added.
SETUP (System Setup Utilities)	Course designator was added.
STU160 (Credit Details) STU164 (Student Credit/Credit Marks Detail)	Course designator was added. Added course designator to list of enforced fields.
Class2Credit (Routine that archives course_selections to credit history)	Populates course designator field in credits.
STU541 (Student Course Selections)	Course designator was added.
STU544 (Student Course Details)	Course designator was added.
SCH056 (Copy Courses)	Course Designator will be included in 'Copy Courses to Next Year'.
Adhoc	Course designator was added. Added field to applicable views.
Conversion Utility	Added field to conversion for standard courses (aa\$ministry_course_codes), Added field to conversion for school courses (aa\$courses), Added field to conversion for student credits (aa\$credits), Added field to conversion for student courses (aa\$course_selections).

Enter the Course Designator on SYS265.FMX Standard Course Codes or SYS266.FMX Standard Course Detail.

Course Designator populates in the following forms:

- Student Credit Detail (STU160),
- Student Credit/Credit Marks Detail (STU164),
- Student Course Selections (STU541),
- Student Course Selections - Detail (STU544)
- Course Maintenance (SCH050)

Enforce Standard Courses

If Company key is set to 'EN' (Enterprise Level) and 'Enterprise Level Courses' is set to 'YES', the Course Designator field cannot be changed at the District, School or student level unless the course designator field was not defined (left NULL).

If 'Enforce Standard Courses at School Level' on Company Update (SYS001) 'School' tab is set to 'YES', and 'Enforce Standard Courses at the Student Level' is set to 'NO', Course Designator field cannot be changed at the school level unless the course designator field was not defined in SYS266 (left NULL), however schools will have the ability to over-ride the value for the student that was brought down from standard courses. The student may require a different Course Designator than what was in the course file. For example, there is a possibility that a student may require a different course designator than what was in the course file.

If 'Enforce Standard Courses at School Level' on Company Update (SYS001) 'School' tab is set to 'YES', and 'Enforce Standard Courses at the Student Level' is set to 'YES', Course Designator field cannot be changed at school or student level unless the course designator field was not defined in SYS266 (left NULL). This locks down what the schools can modify as it relates to Course Designator.

If 'Enforce Standard Courses at School Level' on Company Update (SYS001) 'School' tab is set to 'NO', and 'Enforce Standard Courses at the Student Level' is set to 'NO', Course Designator field can be changed anywhere within eSIS. For example, there may be times where a school would assign a different course designator value than what was in standard courses at either the course or student level.

If a course is added to Credits directly, the field will be populated according to enforce standard course rule setting.

SCR15230

The label has been changed from "# of repeats" to "Times for Credit".

The hint now reads "Number of times the course may be taken and credit earned."

Bugs

SCR29714

Now when a user adds courses on SYS265 'Standard Courses' screen and clicks detail button, "Allow Crs Desc Override" field defaults to 'No'. Previously it defaulted to blank.

State/Ministry Courses SYS268.FMX

Bugs

SCR32241

An Oracle error is no longer generated using 10g runtimes.

Nurses

Screening Results SYS171.FMX

SCR30470

CRM Case No.1-10591

Previously, the user was unable to update the Default field (at least one record must be set to 'Y' as the default for STU300 Nurse's Screening to load) and that has been corrected.

Miscellaneous

Path: Administration > System Codes > Miscellaneous

Employers SYS656.FMX

Bug

SCR32626

CRM Case No.1-14578

You are now able to change the description field for entries with the same Description, and delete any existing records.

Adhoc Fields

Enter Ad-Hoc Fields ADH040.FMX

Path: Administration > Adhoc Fields

Bugs

SCR32109

Previously, when a user selected the Enter Adhoc Fields button from SCH680 without selecting a Reporting Term and student, an Oracle error (FRM 40735) was incurred and the form was not accessible. ADH040 no longer generates an Oracle error, showing records for multiple students when no Reporting Term or single student was selected.

School:

School Information

School Details SYS040.FMX

Path: School > School Information

Enhancements

SCR24663

An enhancement has been made to the GPA module to allow a special GPA calculation after Quarter 3 (interim marks) have been posted. It allows multiple marks from the same course length to be weighted and included in the Cumulative GPA - including Courses in Progress calculations in the GPA module. See SYS001.FMX Company Update in this document.

SCR27523

An enhancement has been made to allow you to decide whether or not you would like to include non-final marks from cross-enrolled courses to be included when calculating “Cumulative GPA including Courses in Progress”. It will also allow the users to select the weight to be used in the calculations for the cross-enrolled courses.

On the Company File, a GPA Module tab was added. You can either default or lock the “Allow non-final marks from cross-enrolled courses to be included in a GPA for “Cumulative including Courses in Progress” GPA Type Calculation” option selected on the Company File to the School Level.

If the Company File “Allow non-final marks from cross-enrolled courses to be included in GPA for “Cumulative including Courses in Progress” GPA Type Calculation” option is defaulted to the School Level, then a user can update the “Allow non-final marks from cross-enrolled courses to be included in GPA for “Cumulative including Courses in Progress” GPA Type Calculation” option in School Details.

If the Company File “Allow non-final marks from cross-enrolled courses to be included in GPA for “Cumulative including Courses in Progress” GPA Type Calculation” option is locked to the school level, then a user can only view the “Allow non-final marks from cross-enrolled courses to be included in GPA for “Cumulative including Courses in Progress” GPA Type Calculation” option in School Details.

You will be able to decide whether or not to include non-final marks for cross-enrolled courses in the Cumulative GPA including Courses in Progress calculations on SCH104, if the option is set to Yes in School Details.

You will be able to specify the weight to be used for non-final marks from cross-enrolled courses in the Cumulative GPA including Courses in Progress calculations on SCH104 if the option to “Include non-final marks for cross-enrolled courses” is turned on.

SCR26237

An option was added to eSIS to allow a user to decide whether the GPA should be truncated or rounded to the 4th decimal and stored in eSIS.

The previous functionality rounded and stored the calculated GPA for a student to the 4th decimal. eSIS can now truncate and store the calculated GPA for a student to the 4th decimal in order to eliminate “double-rounding” of a student’s GPA because on the Secondary Report Card and on the Secondary VISI Labels, the stored GPA is rounded to the 3rd decimal.

Raw Score	Truncate Option		Round Option	
	Truncate/Store 4 Decimals in eSIS	Round to 3 Decimals on Report Card	Round/Store 4 Decimals in eSIS	Round to 3 Decimals on Report Card
2.90005	2.9000	2.900	2.9001	2.900
2.99945	2.9994	2.999	2.9995	3.000
2.99955	2.9995	3.000	2.9996	3.000
3.50045	3.5004	3.500	3.5005	3.501
3.04545	3.0454	3.045	3.0455	3.046

Indicate on the GPA tab of the Company file that you want to:

- **Truncate – Lock** – which will force all schools associated to the company key to use the Truncated GPA Calculation Option.
- **Truncate – Default** – which will default all schools associate to the company key to use the Truncated GPA Calculation Option but the schools will have the authority to override the Company Option in School Details.
- **Round – Lock** - which will force all schools associated to the company key to use the Rounded GPA Calculation Option.
- **Round – Default** – which will default all schools associate to the company key to use the Rounded GPA Calculation Option but the schools will have the authority to override the Company Option in School Details.

On the More School Details screen, select the new GPA Options button. The following options are available from the Truncate or Round GPA to the 4th Decimal Option field:

- If the `SCHOOLS.GPA_TRUNC_OR_ROUND_IND = 'TL'`, then displays “Truncate” in the list item BUT the field is disabled.
- If the `SCHOOLS.GPA_TRUNC_OR_ROUND_IND = 'TD'`, then displays “Truncate” in the list item AND the field is enabled.
- If the user changes the option from “Truncate” to “Round” and SAVES, then set `SCHOOLS.GPA_TRUNC_OR_ROUND_IND = 'RD'`.
- If the `SCHOOLS.GPA_TRUNC_OR_ROUND_IND = 'RL'`, then displays “Round” in the list item BUT the field is disabled.
- If the `SCHOOLS.GPA_TRUNC_OR_ROUND_IND = 'RD'`, then displays “Round” in the list item AND the field is enabled.
- If the user changes the option from “Round” to “Truncate” and SAVES, then sets `SCHOOLS.GPA_TRUNC_OR_ROUND_IND = 'TD'`.

Course Lengths/Start Dates SYS585.FMX

Path: School > School Information > School Details > More Info > Course Lengths and Start Dates

SCR20578

Enhancements

When updating the course start_dates, an alert now displays saying that changes will cascade to the associated Master Timetable. If you select OK, all records associated to the Master Timetable will be updated accordingly.



School Information continued

Reporting Periods SCH100.FMX

Path: School > School Information > Reporting Periods

Enhancements

SCR24663

An enhancement has been made to the GPA module to allow a special GPA calculation after Quarter 3 (interim marks) have been posted. It allows multiple marks from the same course length to be weighted and included in the Cumulative GPA - including Courses in Progress calculations in the GPA module. See SYS001.FMX Company Update in this document.

SCH215.FMX Non-School Days

Path: School > School Information > Non School Days

Bug

SCR27349

Previously, when a non-school day was created in School Closing Entry (ATT060) and re-instated by deleting the non-school day in Non-School Days (SCH215), the user could not access the date through the ATT010 calendar even though the date showed in white (school day). Now, after deleting a non-school day, the date is accessible for attendance.

Room Maintenance SCH030.FMX

Path: School > School Information > Homeroom Maintenance

Bug

SCR31038

CRM Case No.1-11347

Now, if user is trying to delete a room that is assigned to a teacher after Save is clicked, user is not getting an Oracle error. There is a new warning message: Cannot delete Room while Timetable exist.

Teams/Groups

Path: School > School Information > Teams/Groups

Student Athletic Eligibility Detail SCH097.FMX

Bug

SCR30242

An Oracle error is no longer generated using 10g runtimes.

Mass Assignments

Path: School > School Information > Mass Assignments > Mass Homeroom Assignment > Mass Homeroom by Period

Bugs

Student Bound for Mass Update STU039.FMX

SCR32247

An Oracle error is no longer generated using 10g runtimes.

Course Information

SCH200.FMX Display Class List

Path: School > Course Information > Class List

SCR29017

The performance of the query has improved.

Course Maintenance SCH050.FMX

Path: School > Course Information > Course Maintenance

Enhancements

SCR28535

A new field called Course Designator was added to enter information pertaining to how a course was taken and a credit was earned. It appears on various forms and reports and can be enforced at the school and student level. See SYS266.FMX Standard Course Detail in this document.

SCR15079

- Create_user and Create_date columns are now populated on the COURSE_EXPLODES table when creating a Course Explode record via SCH050.FMX Course Maintenance (on the 'More' canvas).
- Duplicate records are no longer permitted on the table.

Course Section Maintenance SCH070.FMX

Path: School > Course Information > Course Section Maintenance

Bug

SCR32317

CRM Case No.1-13755

Previously users were unable to delete a schedule record of a course in course section maintenance. When trying to delete some entries made in the 'Schedule' section, trying to delete and save the change triggered a message "FRM-40202 Field Must Be Entered " and no further changes could be made. This has been fixed and a user is now able to delete a schedule record of a course in course section maintenance.

Note: The students and the attendance records must be removed from the schedule record prior to a delete.

Incident Reporting

Path: School > Incident Reporting

Student Incident Summary STU190.FMX

Bug

SCR30219 (1405)

Student Incidents Summary screen now displays school number information correctly.

Incident Victim Information STU199.FMX

Path: School > Incident Reporting

Bugs

SCR31885

Previously, the tool tips' background colour was incorrect and attempting to save on 10g runtimes incurred an error message (FRM-40112). Now, the tool tips' background colour has been changed to a light yellow and the user no longer receives an Oracle error upon attempt to save with 10g runtimes.

SCR32035

An Oracle error is no longer generated using 10g runtimes.

Incident Detail STU196.FMX

Path: School > Incident Reporting > School Incident Detail

Bugs

SCR31596

CRM Case No.148-11718

Logic was modified to ensure that incident dates were auto populated when creating a new incident record. This eliminated the oracle error when the user attempted to save.

Student Incident Details STU195.FMX

Path: School > Incidents Reporting > Students Involved

Bugs

SCR31884

- A tool tip has been added to the Enter Adhoc Fields button.
- All tool tip background colours are correct now.
- Hints have been added to the ? buttons.

SCR32061

Logic has been added to make the Incident/Offense field mandatory. If the field is not populated and the user attempts to save the record, the system will display a message stating that the Incident/Offense field must be populated.

SCR32157

CRM Case No.1-13335

Logic has been added to determine if the student is registered or not. If not, but the student has committed an offense the offense can be recorded, but no attendance record will be created. The system will display an error message stating that attendance cannot be taken for a student that is not registered when the incident record is saved.

SCR32384**CRM Case No.1-13893**

Previously, when a school's tumblers were set up such that a course would run in two periods consecutively, once a user gave a student a suspension on the incidents screen, an attendance record would display on the student absence screen with the wrong period. In addition, when the user selected view by class radio button on the student absence screen, the tumble pattern would not display for the record entered by the suspension.

Now, when a school's tumblers are set up such that a course runs in two periods consecutively, once a user gives a student a suspension on the incidents screen, an attendance record displays on the student absence screen with the correct periods depending on the current tumble. In addition, when the user selects view by class radio button on the student absence screen, the tumble pattern now displays for the record entered by the suspension.

SCR32473**CRM Case No.1-14069**

When changing an Incident Date/time and Action Date/time to a previous date, the system will validate that the Action Date/time occurs after the Incident Date/Time on Save. Previously, the validation was taking place as the Action Date/time was being changed.

SCR32575 (75463)**CRM Case No.1-14425**

- If letters are to be printed from STU195, the list populated in STU710P will only be of the incidents where the suspension code equals the value entered in the company file, for the school and the board the user is locked in.
- If letters are to be printed from the reports menu, the list shows the letters from the school and the board that the user is currently locked in. If a user has access to more than one school or district and wants to print a letter that belongs to any of those, he has to exit the form and change the school.

Nursing Information**Student Medications Detail SCH175.FMX**

Path: School > Nursing Information > Medications > Students Scheduled Medications

Bugs**SCR30450**

Now you can uncheck the PRN checkbox and add a medication schedule with two rows of information without an oracle error message displaying. Previously, the PRN checkbox was unchecked and a schedule added, upon adding a second row to the medication schedule, an oracle error message displayed.

Immunization Fast Entry STU230.FMX***Bugs*****SCR32175****CRM Case No.144-13392**

Previously when a user added or modified any single dose in a series, the Mod User and Mod Date for all other doses in the series were improperly updated.

Now when a user modifies a single dose in a series, the Mod User and Mod Date fields are updated correctly on Immunization Compliance Detail screen. Mod User and Mod Date fields for other doses from the same series stay unchanged.

SCR29182**CRM Case No.**

Previously STU230 was called, if an Immunization Series had no Doses (from the System Codes set up) an ORACLE Error was generated. Now the user is presented with a message that tells them to first set up doses in the Series vaccinations form.

SCR32178

A 10G Oracle form error is no longer generated on entry into STU230.

Mark Information**Mark Entry SCH133.FMX**

Path: School menu > Mark Information > Secondary > Mark Entry

Bug.**SCR30847****CRM Case No.1-11243**

Previously when a user typed in a reporting period mark not having Conv value in school Mark Scale Entry and tabbed out in the mark entry screen, an oracle error was showing.

Now this problem is resolved. When a user types in a reporting period mark not having Conv value in school Mark Scale Entry and tabs out in the mark entry screen, this mark will be ignored and Cum column will be blank. Also, Sem Gr will be calculated correctly based on Exam mark when reporting period mark is ignored.

Master Timetable Builder Start Screen MTBSTART.FMX

Path: School > Master Timetable Builder

Course Conflict Summary MTB025.FMX

Path: School > Master Timetable Builder

Bug**SCR32133**

An Oracle error FRM-40735 is no longer generated when selecting the Schedule Displayed Course button.

GPA Module**Review Calculated GPAs SCH104.FMX**

Path: School > GPA Module > Run GPA Calculation

Bug**SCR27945 (485)**

When calculating weighted GPAs for Current Reporting Period, the column Term_Weighted_GPA of table STUDENTS will be populated.

GPA Module Option SCH330.FMX**School Reporting Dates SCH102.FMX****Review Calculated GPAs SCH104.FMX****GPA Type Criteria SCH103.FMX*****Enhancements*****SCR24663**

An enhancement has been made to the GPA module to allow a special GPA calculation after Quarter 3 (interim marks) have been posted. It allows multiple marks from the same course length to be weighted and included in the Cumulative GPA - including Courses in Progress calculations in the GPA module. See SYS001.FMX Company Update in this document.

See also Appendix A – GPA Calculation after Quarter 3 for more information.

GPA Type Criteria SCH103.FMX

Path: School > GPA Module > GPA Types Criteria

Enhancements

SCR24663

An enhancement has been made to the GPA module to allow a special GPA calculation after Quarter 3 (interim marks) have been posted. It allows multiple marks from the same course length to be weighted and included in the Cumulative GPA - including Courses in Progress calculations in the GPA module. See SYS001.FMX Company Update in this document.

SCR23976

To increase flexibility within the GPA module to reflect the fact that different grades within a school may have different rules for calculating official GPAs or official custom GPAs, you can now restrict the GPA to specific grade levels and have multiple Official GPAs and multiple Official Custom GPAs as long as there is no grade overlap.

Multiple Official GPAs per school would allow those schools that contain both middle and high school students to have an official GPA for their high school students and a different official GPA for their middle school students.

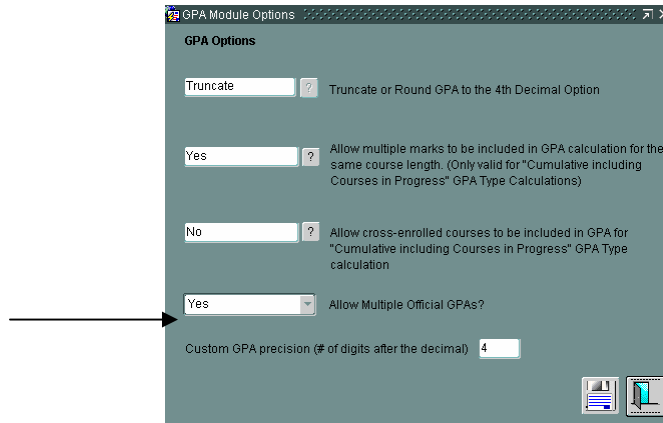
- A GPA Type cannot be identified as both the Official GPA and the Official Custom GPA.
- Schools who take advantage of this functionality are able to restrict GPAs (official, official custom) to specific grade levels provided that there is no grade overlap.
- Within eSIS, schools will have the option to allow 'Multiple Official GPAs'. If this option is set to Yes, a school will be able to create multiple Official GPAs and multiple Official Custom GPAs. The option to set grade level restrictions will also be available.
- If the option to allow 'Multiple Official GPAs' is set to No, schools will have the option of creating one official GPA (current functionality) and one official Custom GPA but the option to set grade restrictions will not be available.
- There are changes to the process for creating regular GPAs (GPAs that are not flagged as official or official custom).

Official Custom GPAs will not work with any of the other GPA formulas - Current Reporting Period, Cumulative – Current Year, Cumulative Incl. Courses in Progress, Courses Formula, Credits Formula.

Official Custom GPAs are tied to the Cumulative All Years Calculation. Cumulative All-Years will automatically be selected on SCH104 when the user selects the GPA flagged as Official Custom.

Configuring a School to Allow Multiple Official and Multiple Official Custom GPAs

1. Navigate to SYS040 and access the 'More School Details' screen.
2. Click the 'GPA Module' button. Two new fields appear:
 - 'Allow Multiple Official GPAs?'
 - 'Custom GPA precision(# of digits after the decimal)'



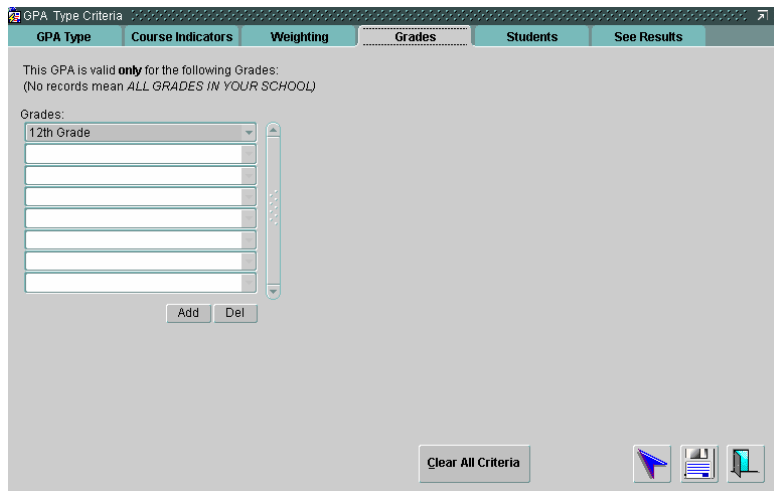
1. Select 'Yes' from the dropdown to 'Allow Multiple Official GPAs?'
2. Enter the number of digits to be used for the decimal precision for custom GPAs.
3. Press the save button. The school has now been configured to allow for multiple official GPAs AND multiple official custom GPAs. The official custom GPAs will have a decimal precision based on the value entered in 'Custom GPA precision (# of digits after the decimal)'

Field Name	Description
Career Development Plan	Populates with the CDP has been selected from the previous screen (Associated CDP Progress or the Intended CDP Progress)
Allow Multiple Official GPAs	<p>This field allows a school to identify whether or not they require the ability to generate more than 'one' official GPA.</p> <ul style="list-style-type: none"> • If 'Yes' is selected removes the restriction that prevents a user from only creating one official GPA per school. • If 'Yes' is selected, displays 'Yes, this is the official CUSTOM GPA' checkbox on SCH103 on the Weighting tab • If 'Yes' is selected, the school has the ability to create more than one 'Official Custom GPA' as well as more than one 'Official GPA', provided there is no grade overlap. • If 'Yes' is selected, triggers the appearance of the 'Grades' tab on SCH103 if a GPA is designated as official or official custom. • If 'No' is selected, does not show the 'Grades' tab on the GPA Type Criteria (SCH103) • If 'No' is selected, does not allow a school to create more than one official GPA • If 'No' is selected, displays 'Yes, this is the official CUSTOM GPA' checkbox on SCH103 but does NOT allow the school to create more than one official CUSTOM GPA.
Custom GPA precision (# of digits after the decimal)	<p>Allows the school to specify the number of digits after the decimal for the 'Custom GPA' field on STU552 since this field currently allows up to ten decimal places.</p> <ul style="list-style-type: none"> • Does not allow the user to enter a value that exceeds 10 • Allows the value to be set to null. If null and a user runs an 'Official Custom GPA' use the default scale (10) for decimal precision in STUDENTS.CUSTOM_GPA • Always appears whether a user selects 'Yes' or 'No' from the dropdown 'Allow Multiple Official GPAs because Official Custom GPAs may be used regardless of the Multiple Feature.

Field Name	Description
	<p>This decimal precision is reflected on STU552 under the 'Custom GPA' field when an Official Custom GPA(s) is run for a student. If the field 'Custom GPA precision (# of digits after the decimal)' is null and a user runs an Official Custom GPA, the system will use the scale on the table (10) and this will be reflected on STU552 under the 'Custom GPA' field; the GPA will calculate to the 10th decimal place.</p>

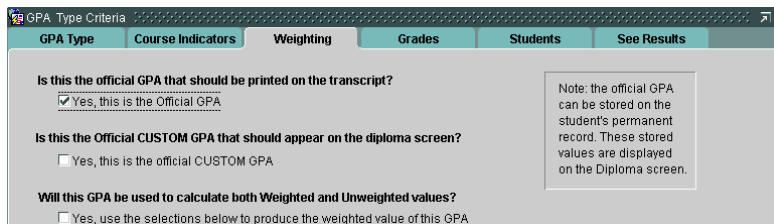
SCH103.FMX GPA Type Criteria

If Allow Multiple Official GPAs = Yes, a new tab displays to allow you to restrict a GPA to specific grade levels provided that there is no grade overlap – only used for official GPAs and official custom GPAs. Populate the Grades dropdown list from the school's grades for the current year on SYS041.FMX School Catchment/Grade Assignment.



Yes, this is the Official GPA - If the checkbox 'Yes, this is the Official GPA' is checked, prevent a user from also selecting the checkbox 'Yes, this is the official CUSTOM GPA' and vice versa.

Yes, this is the official CUSTOM GPA - If the checkbox 'Yes, this is the official CUSTOM GPA' is checked, prevents you from also selecting the checkbox 'Yes, this is the Official GPA' and vice versa.



SCH104R.REP GPA Generated

Excluded Student label and student information will only appear on SCH104R if a GPA has been created with grade restrictions and students were not processed for that GPA due to invalid grades; otherwise the header and student information will not appear on the report. Only students who were not processed will appear under Excluded Students.

Categorizes excluded students by their grade with the earliest grades displaying first a

Highlighting a row on SCH104 and clicking the print button will generate SCH104R

The GPA and Ranking will skip any students included in the demo extract that do not meet the grade restrictions associated with that GPA. A message will display on SCH104 if some of the students were not processed "There were xx students from the extract who were skipped due to invalid grade levels for that GPA".

For any GPA where grade restrictions are in place and students were not successfully processed in that GPA, you will be able to access SCH104R to identify both students who were successfully processed in that GPA run and students who were excluded from the GPA (under the heading Excluded Students). The ability to view excluded students will only ever be available on SCH104R if the GPA was created with grade level restrictions in place and students were not successfully processed due to invalid grade levels.

As long as you have access to SCH104, you are able to highlight a GPA and generate SCH104R. Access to the report is not limited to the user who ran the selected GPA.

SCH104R can also be used by all clients (whether or not grade restrictions are in place for a GPA) to view students who were successfully processed. The report displays detailed information based on the students who were processed (see prototype). The 'Excluded Students' portion only ever displays if the GPA was created with grade level restrictions in place and students were not successfully processed due to invalid grade levels; else this portion of the report will not appear.

GPA Module Option SCH330.FMX Review Calculated GPAs SCH104.FMX

Path: School > School Information > School Details > More School Details > GPA Module button

Enhancements**SCR27523**

An enhancement has been made to allow you to decide whether or not you would like to include non-final marks from cross-enrolled courses to be included when calculating "Cumulative GPA including Courses in Progress". It will also allow the users to select the weight to be used in the calculations for the cross-enrolled courses.

On the Company File, a GPA Module tab was added. You can either default or lock the "Allow non-final marks from cross-enrolled courses to be included in a GPA for "Cumulative including Courses in Progress" GPA Type Calculation" option selected on the Company File to the School Level.

If the Company File "Allow non-final marks from cross-enrolled courses to be included in GPA for "Cumulative including Courses in Progress" GPA Type Calculation" option is defaulted to the School Level, then a user can update the "Allow non-final marks from cross-enrolled courses to be included in GPA for "Cumulative including Courses in Progress" GPA Type Calculation" option in School Details.

If the Company File "Allow non-final marks from cross-enrolled courses to be included in GPA for "Cumulative including Courses in Progress" GPA Type Calculation" option is locked to the school level, then a user can only view the "Allow non-final marks from cross-enrolled courses to be included in GPA for "Cumulative including Courses in Progress" GPA Type Calculation" option in School Details.

You will be able to decide whether or not to include non-final marks for cross-enrolled courses in the Cumulative GPA including Courses in Progress calculations on SCH104, if the option is set to Yes in School Details.

You will be able to specify the weight to be used for non-final marks from cross-enrolled courses in the Cumulative GPA including Courses in Progress calculations on SCH104 if the option to “Include non-final marks for cross-enrolled courses” is turned on.

GPA Module Option SCH330.FMX

Path: School > School Information > School Details > More School Details > GPA Module button

Enhancement

SCR26237

An option was added to eSIS to allow a user to decide whether the GPA should be truncated or rounded to the 4th decimal and stored in eSIS.

The previous functionality rounded and stored the calculated GPA for a student to the 4th decimal. eSIS can now truncate and store the calculated GPA for a student to the 4th decimal in order to eliminate “double-rounding” of a student’s GPA because on the Secondary Report Card and on the Secondary VISI Labels, the stored GPA is rounded to the 3rd decimal.

Raw Score	Truncate Option		Round Option	
	Truncate/Store 4 Decimals in eSIS	Round to 3 Decimals on Report Card	Round/Store 4 Decimals in eSIS	Round to 3 Decimals on Report Card
2.90005	2.9000	2.900	2.9001	2.900
2.99945	2.9994	2.999	2.9995	3.000
2.99955	2.9995	3.000	2.9996	3.000
3.50045	3.5004	3.500	3.5005	3.501
3.04545	3.0454	3.045	3.0455	3.046

Indicate on the GPA tab of the Company file that you want to:

- **Truncate – Lock** – which will force all schools associated to the company key to use the Truncated GPA Calculation Option.
- **Truncate – Default** – which will default all schools associate to the company key to use the Truncated GPA Calculation Option but the schools will have the authority to override the Company Option in School Details.
- **Round – Lock** - which will force all schools associated to the company key to use the Rounded GPA Calculation Option.
- **Round – Default** – which will default all schools associate to the company key to use the Rounded GPA Calculation Option but the schools will have the authority to override the Company Option in School Details.

On the More School Details screen, select the new GPA Options button. The following options are available from the Truncate or Round GPA to the 4th Decimal Option field:

- If the `SCHOOLS.GPA_TRUNC_OR_ROUND_IND = 'TL'`, then displays “Truncate” in the list item BUT the field is disabled.
- If the `SCHOOLS.GPA_TRUNC_OR_ROUND_IND = 'TD'`, then displays “Truncate” in the list item AND the field is enabled.
- If the user changes the option from “Truncate” to “Round” and SAVES, then set `SCHOOLS.GPA_TRUNC_OR_ROUND_IND = 'RD'`.
- If the `SCHOOLS.GPA_TRUNC_OR_ROUND_IND = 'RL'`, then displays “Round” in the list item BUT the field is disabled.
- If the `SCHOOLS.GPA_TRUNC_OR_ROUND_IND = 'RD'`, then displays “Round” in the list item AND the field is enabled.
- If the user changes the option from “Round” to “Truncate” and SAVES, then sets `SCHOOLS.GPA_TRUNC_OR_ROUND_IND = 'TD'`.

Scheduling Utilities

Class Transfer SCH015.FMX

Path: School > Scheduling Utilities > Class Transfer

SCR15256

- If simulation returns a failed status for a student, a user now receives the following alert message: 'Current Year Course Selections that were not successfully simulated will not be saved.'
- Also, in the Course_Selections table all the Current Year unsimulated course selections are now deleted

Bugs

SCR30084 (BZ # 2430)

Previously, the tool tip for the Student LOV was "Press To select Courses". Now, it has been corrected to be "Press To select Student"

SCR30995

Now, the OK button on the Current Year popup is the standard grey; tabbing sequence has been modified to streamline data entry and fonts have been corrected for a unified appearance.

Mass Updates

Path: School > Mass Update

MAS010.FMX Mass Update Single Value

MAS020.FMX Mass Update Multi Value

MAS030.FMX Mass Add Into SPED

MAS040.FMX Mass Update Diploma Dates

MAS050.FMX Transfer Students from Holding District

Enhancement

SCR15201

Two new fields Last Name and First Name are added to these screens. Depending on the company file, First Name can be Legal or Preferred and Last Name can be Legal or Usual. These two new fields can be sorted on.

Mass Exemption of Immunization Series MAS060.FMX

Bug

SCR32110

Previously, when a user selected the Apply Exemptions icon and no students were found on the most recent extract and/or no series was selected, the system displayed the hint "FRM-40735 WHEN-BUTTON-PRESSED trigger raised unhandled Exception ORA-01400".

Now, when a user selects the Apply Exemptions icon and no students are found on the most recent extract, this hint appears: "No students available to exempt. Please run extract prior to pressing Apply Exemptions button." If no series was selected when the user selects the Apply Exemptions icon then this hint appears: "Please select Series to Exempt prior to pressing Apply Exemptions button."

Parent Assistant

Parent Assistant - Create User/Parent Interface PI010.FMX

Path: School > Parent Assistant > Create Parent User

Bug

SCR27432

Now, on the Parent Assistant- Create User/Parent Interface screen, when the user queries for an existing parent user and then presses the Load Parents Student button, regardless of the length of the student's name, he/she will display on the screen without an oracle error message displaying at the bottom of the screen. Previously if the student's name was too long, an oracle error message would display

Common View:

Basic Student Demographics STU105.FMX

Path: Common View > Basic or basic button on start screen

Enhancements

SCR21705

Update of the Parent records in STU115, will now be automatic so that the changes made to the student record via STU105 are applied to the applicable parent records when you choose to do so.

Note: In order for this to work, the "Same as student's address" must be checked in the Parent information screen, STU115.

SCR27428

Previously on the Basic Student Demographics screen, when a user queried for students and scrolled until they reached a person with an invalid address, upon exiting the screen the "Do you want to save?" message would display.

Now, when querying for students and scrolling until you reach a student with an invalid address or a student whose address is out of the school's catchment, you can exit the screen without the "Do you want to save?" message displaying.

SCR29997

You can now tab forward and back correctly even when the Rural fields are displayed on Student Basic Demographic screen. ("Use Lot, Concession and RR" on Student Basic Tab set to Yes on a Company file)

Bugs

SCR19221

Previously when a user changed/assigned a "tuition paid by" code to a student on either STU105 (Student Basic Demographics) or STU106 (Immigration/Miscellaneous), a record was inserted into the Demographic Change Log with a null Effective date. Now, the Effective date defaults to the system date. The user can then update the effective date on the Demo Change Log, if necessary.

SCR23922

Previously an error message was generated every time a student that was out of boundary or out of district was queried. Now for the current school year, if a student's home school has NULL values in the catchment portion of SYS041 (Grades and Catchments), the system suppresses catchment error messages in STU105. Two messages that are suppressed are:

- 'The student's address falls into a catchment owned by (school long name). The student's home catchment/school has been set accordingly.'
- 'The student's address cannot be found in the list of valid addresses, or address exists outside your District/Board.'

However, these catchment messages will still appear if a student is being admitted or if address information is changed. If catchment values exist in SYS041 all messages in STU105 will continue to appear as currently functioning in eSIS.

SCR21659

When you admit a student that has existing siblings and change any of the student's demographic information, when you save the siblings window displays. Previously if you did not check on a sibling and just clicked ok you were caught in a loop. Now when getting the sibling window and leaving it unchecked the student can be registered successfully.

SCR28714 (BCC4610)

Previously if the Company file had a blank Default Ethnicity field, admitting an already withdrawn student prompted you to complete the Ethnicity/Race field and did not allow the record to be saved. Now, when the Default Ethnicity field is blank on the Company file, you can admit an already withdrawn student and save the record.

SCR29961

Previously when logging in with a School User Account and admitting a new student (from Start Screen > Admit > Enroll New) the cursor defaulted to the Legal Last Name field. Also, if you tried to change the Gender to Male, it defaulted back to Female.

Now connecting as a School User and admitting a new student, the cursor on STU105 is not defaulted to Legal Name. Also the Gender field is highlighted and you can change the gender.

SCR29335

Previously an error message : "FRM-40508 ORACLE error unable to INSERT record." was generated while admitting a new student if the user entered 'Tuition paid by' and 'Tuition type' fields. Now student can be admitted even when 'Tuition paid by' and 'Tuition type' fields are entered.

SCR31050

An Oracle error is no longer generated when trying to admit a student using the Oracle 10G runtimes.

SCR31083

CRM Case No.1-11490

Previously if a user ran a query for all students (F7/F8) on STU105, then scrolled through the records and tried to save a change to a field, an Oracle error message appeared: 'FRM-40741: Unable to locate record 2 on block STUDENT'

Now you can query all students and then save changes to fields on STU105 with no errors.

Student Course Selections STU541.FMX

Path: Common View > Courses or courses button on start screen

Enhancements

SCR28535

Course Designator was added to enter information pertaining to how a course was taken and a credit was earned. It appears on various forms and reports and can be enforced at the school and student level. See SYS266.FMX Standard Course Detail in this document.

SCR30160

Triggers were added to STU541 for set defaults for SRFLCS1.FMX Florida State Specific Course Selections Info. Only Florida users will see this. SRFLCS1 is the state specific screen off of stu541>details>state details.

Bug

Path: Common View > Courses

SCR31588

Users can now perform large 'Final' GPA runs and also simultaneously add/drop courses on STU541 from students who are included in the GPA run - while the GPA run is still processing.

Final Marks STU001.FMX**Bug****SCR30376**

Previously while dropping a course with no final mark - it brought you to STU001 and displayed errors. You are now able to enter and save a final mark.

Credit Detail STU160.FMX**Student Credit/Credit Marks Detail STU164.FMX**

Path: Common View > Credit Details

Enhancements**SCR28535**

A new field called Course Designator was added to enter information pertaining to how a course was taken and a credit was earned. It appears on various forms and reports and can be enforced at the school and student level. See SYS266.FMX Standard Course Detail in this document.

SCR30159

A new tab was added to STU164 that is Florida State Specific. The tab only displays on STU164 if the state is set to Florida on the Company file.

The following fields were added to the new tab:

- State Rpt Term – for records that are transitioned from courses to credits, populates this field with the State Reporting Term specified on the Course Start Date screen for the corresponding course start date for the course. (NOTE: The existing TERM field on STU160/164 will no longer be used for Florida State Reporting but will remain on STU160/STU164).
- Dual Enrolment – populates the field with the value stored on SR_COURSE_SELECTIONS.
- Course Flag – pulled from CREDITS (NOTE: This field currently exists on STU160/STU164 and may potentially be moved to the new tab).
- Voc. Adult Comp. Point – populate the field with the value stored on SR_COURSE_SELECTIONS.
- Except. Student Voc. Setting – populates the field with the value stored on SR_COURSE_SELECTIONS.
- LEP Instr. Strategy – populates the field with the value stored on SR_COURSE_SELECTIONS.
- Mod. Occ. Completion Point – populates the field with the value stored on SR_COURSE_SELECTIONS.
- Internship Participant – populates the field with the value stored on SR_COURSE_SELECTIONS.
- Youth Apprtp. – populates the field with the value stored on SR_COURSE_SELECTIONS.

All fields are updateable.

S28276

The following changes were made:

- A COURSE_GRADE_LEVEL column was added to the CREDITS table
- In STU160, a COURSE_GRADE_LEVEL column and the associated enforcement logic was added. Also the auto-population problem of various fields was corrected: Subject Category, Academic Level, Course Type, HS credit, HS apply and Course Designator.
- In STU164, a COURSE_GRADE_LEVEL column and associated enforcement logic was added. Also RG_SUBJECT_CATEGORY_CODES were changed to pick up the description rather than the external code.
- When a course is aged to credits, COURSE_GRADE_LEVEL is populated with the grade level of the course from course maintenance. The Grade level of the student will continue to populate the GRADE field. The new CREDITS.COURSE_GRADE_LEVEL column is only used if populated, otherwise uses the existing grade column.
- The AA\$SIS\$GPA_GENERATOR1 package was modified to reference the new CREDITS.COURSE_GRADE_LEVEL column instead of the current reference to CREDITS.GRADE.
- AA\$SIS\$GPA_GENERATOR1.GPA_YEAR was modified to use the course grade level filter.
- Scripted to populate new CREDITS.COURSE_GRADE_LEVEL column for historical records - in the interest of not wreaking havoc on the way diplomas are being evaluated now, update CREDITS.COURSE_GRADE_LEVEL to CREDITS.GRADE value (if not null)

Bugs**SCR31426****CRM Case No.1-11709**

When adding a course to credit details, an error message advising the user that the earned credit cannot be greater than the potential credit was appearing even though the user had defined an earned credit equal to potential credit prior to saving. A user can now enter an earned credit (depending on the Company option), then enter a potential credit that is equal to or greater than the earned credit and save the record with no errors.

SCR29981 (SEA501B)

The drop down list of 'Subject Cat' column has been modified to display Subject Category Description not the External Codes.

SCR32164 (ICR00000331)**CRM Case No.1-12912**

When standard courses are enforced at the school level, and a new record is added to Credit Details, STU164, all the fields defined in SYS266 (and exist in STU164) will auto-populate with the data in SYS266. The following options are not included in this autopopulation if these are left null in SYS266:

- GPA
- Ranking
- HS Apply
- HS Credit
- Honor Roll
- On RC
- Vocational Ind

These are set to their defaults as defined at the database level.

SCR32477

Previously there were Oracle errors when attempting to add a course on 'Student Credit/Credit Marks Detail' using 10G runtimes. A course can now be added successfully.

SCR31453 (L1021)
CRM Case No.1-11710

Adding a course to credit details from the Add from Course List button was causing the Dipl Ovr checkbox to be automatically checked on. This has been corrected.

SCR31426

When adding a course to credit details, STU164, the error message advising the user that the earned credit cannot be greater than the potential credit was appearing even though the user had defined an earned credit equal to potential credit prior to saving. Now a user can now enter an earned credit (depending on company option), then enter a potential credit that is equal to or greater than the earned credit and save the record with no errors.

SCR30796

CRM Case No. – 98-11180

Previously dropped courses were appearing in the matrix. Now only courses that are live in the survey week will be reported.

Student Diploma Screen STU552.FMX
Analyze Diploma STU555.FMX
Career Development Modeling STU554.FMX

Path: Common View > Diploma or Diploma button on Start Screen

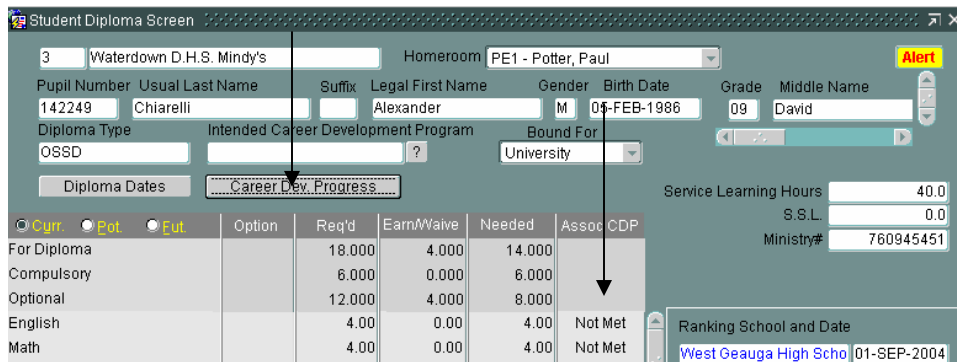
Enhancement

SCR22670

Student Diploma screen STU552 has been modified to query up students that reflect the currently selected values: All (current + wdr) or Current radio button in START screen.

All (current + wdr)
 Current

There are now two views of STU554.FMX Career Development Modeling which is found on STU552.FMX Student Diploma Screen.



1. The first view is found under the Career Dev. Progress Button. This is the Intended CD Programs and is a view only screen that also allows you to Print a copy of the selected student's intended Career Development.

Student Career Development Plan Progress

3 Waterdown D.H.S. Mindy's Homeroom PE1 - Potter, Paul Alert

Pupil Number Usual Last Name Suffix Legal First Name Gender Birth Date Grade Middle Name
 142248 Chiarelli Alexander M 05-FEB-1986 09 David

Diploma Type Student's Current Intended CD Program
 OSSD

Intended CD Programs	Path	Path Details				
		Description	Credits	Unit Type	First Grp	Last Grp
1999-Advanced Arts	Desc 1		2.000	Credits	1	2
1999-Advanced Languages						
1999-Advanced Math						
1999-Bobbins						

Student Progress Summary

First Group	Last Group	Units	Units Required	Earned	Needed	
1	2	Credits	2	0	2	Courses
						Courses
						Courses
						Courses

Total Remaining 2

- This new view of the existing STU554 screen incorporates fields from both STU554 and SYS660 in addition to some existing fields.

Note: See Field/Description table below that describes those fields found in this view.

- The second view is found under the Assoc CDP Column on STU552.FMX Student Diploma Screen, when you double-click on the Met or Not Met words associated to a Diploma Category. This will open the new STU554.FMX Career Development Modeling View Screen that allows you to override a Diploma Category.

Student Career Development Plan Progress

3 Waterdown D.H.S. Mindy's Homeroom PE1 - Potter, Paul Alert

Pupil Number Usual Last Name Suffix Legal First Name Gender Birth Date Grade Middle Name
 142248 Chiarelli Alexander M 05-FEB-1986 09 David

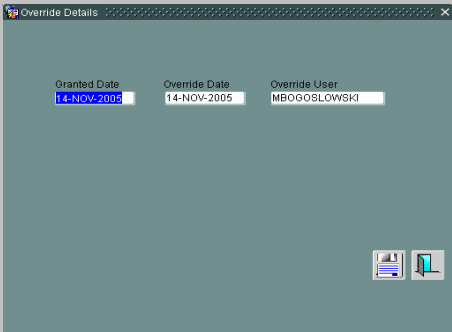
Diploma Type
 OSSD

Associated CDP	Path	Path Details				
		Description	Credits	Unit Type	First Grp	Last Grp
1999-Advanced Languages	Foreign Legion Rep		2.000	Credits	A	A
1999-Advanced Math	French Translator		1.000	Credits	B	B
			3.000	Credits	C	C

Student Progress Summary

First Group	Last Group	Units	Units Required	Earned	Needed	
A	A	Credits	2	0	2	Courses
B	B	Credits	1	0	1	Courses
C	C	Credits	3	0	3	Courses

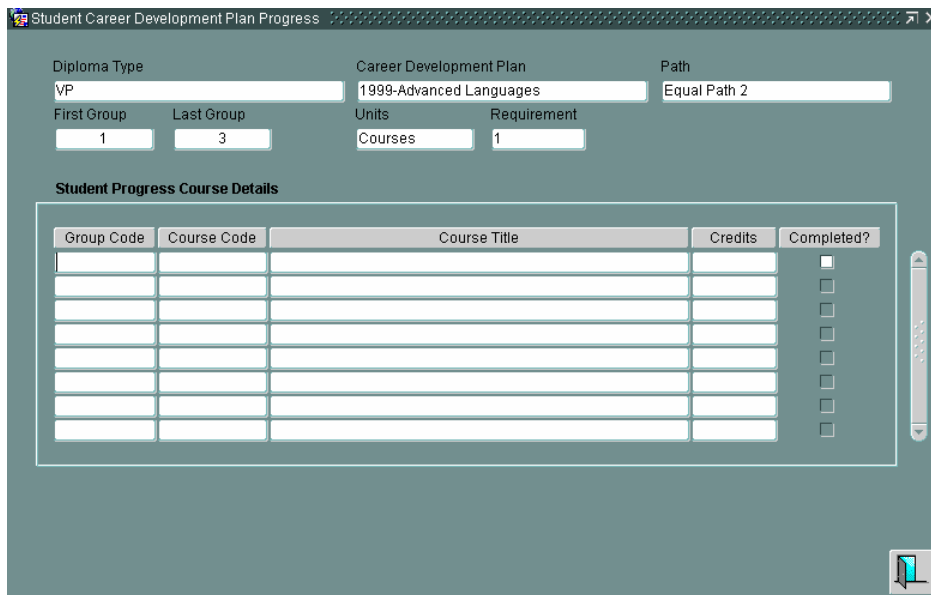
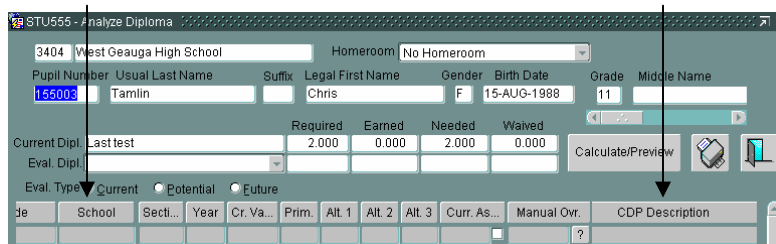
Total Remaining 6

Field Name	Description
Diploma Type	Populates with the diploma type associated to the student.
Student's Current Intended CDP	Populates with the student's current Intended CDP.
Year and CD Program	The Year and Description of the CDPs available to the student as possible intended CDPs. Only categories that have associated CDP(s) will be listed here.
Override	Click to override this diploma category. When a category is overridden it will be considered 'Met'. When override is removed the system will determine met/not met based on actual results. The "Met" indicator on the Student Diploma screen (STU552) will be displayed in bold when that Assoc CDP is overridden.
"?"	This field is used in conjunction with the override checkbox. When the override checkbox is checked and this button is pressed the user is navigated to the "Override Details" screen. Click to view override details. You are able to enter override details when the override button is selected. 
Description	Displays the description of the path. Note: There may be more than one path per selected category. Displays as it currently does on SYS660. The Paths section displayed are the ones associated to the selected Diploma Category selected.
Credits	Displays the number of credits/courses required to meet the 'path'. Displays as it currently does on SYS660.
Unit Type	Displays the type of unit such as Credits or Courses. This field will display as it currently does on SYS660.
First Grp	Displays group number from which the course or credit must come from. This field is used in conjunction with 'Last Grp' to define a range of groups. Displays as it currently does on SYS660.
Last Grp	Displays group number from which the course or credit must come from. This field is used in conjunction with 'First Grp' to define a range of groups. Displays as it currently does on SYS660.
Student Progress Summary	This section will Displays the student progress for selected Path of the currently selected Diploma Category.
First Group	Displays group number from which the course or credit must come from. This field is used in conjunction with 'Last Group' to define a range of groups. Displays as it currently does on STU554.
Last Group	Displays group number from which the course or credit must come from. This field is used in conjunction with 'First Group' to define a range of groups. Displays as it currently does on STU554.
Units (existing)	Displays the type of unit (course or credit) for this group. Displays as it currently does on STU554.

Field Name	Description
Units Required	Displays the number of units required for this group. Displays as it currently does on STU554.
Earned	Displays the number of units earned for this group. Displays as it currently does on STU554.
Needed	Displays the number of units needed (not yet earned) for this group. Displays as it currently does on STU554.
Courses Button	Navigates the user to the CDP Progress Detail screen.
Total Remaining	Displays the total of all the units that are still needed to meet the CDP. No change to existing functionality.

Two new fields, School and CDP Code, have been added to the existing Analyze Diploma Screen.

- The **School** field displays either the number or short name of the school, if one exists, dependant upon the company file setting in "School Preferences" on the "School" tab.
- The **CDP Description** field displays the associated CDP description, if one exists for each course listed.



Field Name	Description
Career Development Plan Path	Populates with the CDP has been selected from the previous screen (Associated CDP Progress or the Intended CDP Progress)
First Group	Displays group number from which the course or credit must come from. This field is used in conjunction with 'Last Group' to define a range of groups.

Field Name	Description
Last Group	Displays group number from which the course or credit must come from. This field is used in conjunction with 'First Grp' to define a range of groups. This field will display as it currently does on STU554.
Units	Displays the type of unit (course or credit) for this group.
Requirements	Displays the number of units required for this group.
Group Code	The Group Code of the Course as entered in the CD Program Details.
Course Code	The Course Code.
Course Title	The Course Title.
Credits	The number of Credits defined for the course.
Completed	Checked if course was completed.

Student Diploma Screen STU552.FMX

Enhancement

To increase flexibility within the GPA module to reflect the fact that different grades within a school may have different rules for calculating official GPAs or official custom GPAs, you can now restrict the GPA to specific grade levels and have multiple Official GPAs and multiple Official Custom GPAs as long as there is no grade overlap. See SCH103.FMX GPA Type Criteria in this document.

- Within the same school, users have the ability to restrict any official GPA (official, custom official) to specific grade levels as long as there is no grade overlap.
- Users have the ability to have more than one official GPA and more than one official Custom GPA within the same school as long as there is no grade overlap when Allow multiple official GPAs is set to Yes in School Details.
- Within the same school, a student may have an official GPA stored and an official custom GPA stored.
- A GPA Type cannot be both the 'Official GPA' and the 'Official Custom GPA'
- The GPA and ranking will skip any students included in the demographic extract that do not meet the grade restrictions associated with the GPA, while noting the students from the extract who are skipped due to invalid grade levels for that GPA.
- The Official Custom GPA can only be unweighted and will be stored on the STUDENTS table and STU552 Diploma screen will show the Official Custom GPA to the decimal point defined in School Details. The user can't run a ranking report for official custom GPA.
- Users will be able to define a single Official Custom GPA, calculate it, store it on the STUDENTS table, view it on STU552 EVEN if they don't use the Multiple feature or grade restrictions.
- The user running the GPA calculation will not need to select 'Cumulative-All Years' when they wish to run an Official Custom GPA, the system will do that for them.
- Users will be able to easily determine which students were skipped and not processed because although these students were included in the Demographic Extract, their grade levels violated the grade restriction rules defined for this official GPA. SCH104R will be used to provide more detailed information regarding students who were successfully processed in a GPA and students who were excluded due to invalid grades for that GPA.

Create Options from Individual Course Plans STU571.FMX

Bug

SCR27317

Now, all valid courses will be copied for Next Year in the Individual Course Plan after course selection. The program continues looking at the rest of the courses instead of stopping when an invalid course is found.

Parent Information STU115.FMX

SCR21705

Path: Common View > Parents/Emergency Contacts

Update of the Parent records in STU115, will now be automatic so that the changes made to the student record via STU105 are applied to the applicable parent records when you choose to do so.

Note: In order for this to work, the "Same as student's address" must be checked in the Parent information screen, STU115.

Medical/Health Information

Path: Common View > Medical/Health

Other Health Factors STU129.FMX

SCR31441

OTHER_HEALTH_FACTORS table is obsolete and was replaced by the STUDENT_HEALTH_FACTORS table.

Programs

Regular and Special Ed. Program Availability SCH049.FMX

Path: Common View > Programs > Student Program Assignment > Available Programs

Bug

SCR32592

A 10G Oracle form error is no longer generated when clicking 'Program Types' or 'School' or 'School Type' section header icon.

Main Menu:

Change Student

Student Course Selections - Detail STU544.FMX

Path: Main Menu > Change Student > Courses > Courses

Enhancement

SCR28535

A Course Designator (for student's academic record) was added to enter information pertaining to how a course was taken and a credit was earned. It appears on various forms and reports and can be enforced at the school and student level. See SYS266.FMX Standard Course Detail in this document.

Bug

SCR32411

Previously, the system allowed the user to 'Exit' when trying to insert a mark period that already existed. This was saved and caused 'Ghost marks' to appear in the other course of the student.

Now the system puts a 'Hard Stop' if the user tries to 'Exit' when trying to insert a mark period that already exists. The system will force the user to 'Close' the form STU544 (Student Course Selections - Detail) and will go back to STU541 - Student Course Selections screen. This prevents the system from inserting a mark period that already exists and will therefore prevent 'Ghost marks' from appearing in the other course of the student.

Programs

Student Standardized Testing STU057.FMX

Path: Main Menu > Change Student > Standardized Testing > Student Test Scoring

Enhancement

SCR25712

Previously sub-tests on STU057 did not appear in the same order as on SCH631(ascending). The sort order for Student Standardized Testing (STU057) was modified to allow a sort order to be based on the sub-test number, same as on SCH631.

Bug

SCR31581

A 10G Oracle form error is no longer generated when clicking "Sub Test" in STU057.FMX Student Standardized Testing.

Student Test History STU645.FMX

Path: Main Menu > Change Student > Standardized Testing > Student Test Scoring > Question History button

SCR32048

An Oracle error is no longer generated when saving Test History information on REL10GR2 database.

Admission/Withdraw Maintenance STU030.FMX

Path: Main Menu > Change Student > Adm/Wdr History

Bug

SCR32595

A 10G Oracle form error is no longer generated on clicking the 'Save' Icon in STU030.

Withdraw Student STU170.FMX

Path: Main Menu > Withdraw Student (or Withdraw button on Start Screen)

Enhancement**SCR29381**

- The Student Withdrawal/Record Transfer Form now has a “Teacher Name” column where the teacher’s name will display.
- In addition, there is a column called “Books or other outstanding resources” beside the Teacher Name column.
- Also, there is now a “Sign Off - Check Out” section, which has the departments listed.
- At the bottom of the report there now exists an “Authorized Parent/Guardian” field, a “Relationship” field and a “Date” field.
- In addition, there is now a place for the School Administrator to put his name put his position and the date.

See more details in the document ACDS Withdrawal Form Checklist.

Bug**SCR30506****CRM Case No.1-10882**

When a central office user performs a No Show on a student who was not previously enrolled into another school, there is an option to transfer that student to another school. Previously, if the user selected to transfer that student to another school, any homeroom history records created by the school performing the No Show would still display on the Homeroom History screen. Now, if the user selects to transfer that student to another school, any homeroom history records created by the school performing the No Show will not display on the Homeroom History screen.

Reports

Path: Main Menu > Reports or Reports button

General Reports

Bugs

ATT035R.REP Attendance Report By Period

SCR32371

CRM Case No.1-13099

Performance has improved.

ATT101R.REP Condensed Daily Attendance Summary

SCR28864

The report is now showing all page numbers. Previously (if the report would have more than 999 pages) the page number field was showing ***** instead of numbers.

ATT370R.REP Attendance Intervention Letters

SCR32427

The version number on the Attendance Intervention Letter is now correct.

ATT400P.FMX Attendance Report Form

SCR31955

CRM Case No.1-12644

Now, when the user prints the Attendance Scan Sheets, the students' names are ordered in alphabetical order not pupil number.

ATT421R.REP Daily Attendance Report - Period

SCR32434

CRM Case No.1-14033

Previously, when a user modified student records in period attendance and/or used a date range in the parameter form instead of a single day, the absents and lates records were incorrect on ATT421R. Now, when a user modifies student records in period attendance and/or uses a date range in the parameter form instead of a single day, the absents and lates records are correct on ATT421R.

ATT510P.FMX Print Enrolment Registers

SCR32389

CRM Case No.1-13587

If you change a homeroom on the student's basic screen it now creates a correct entry on homeroom Enrollment Registers (ON) report.

ATT601P.FMX Students with Attendance Problems - Daily

SCR30483 (ICR00000137)

CRM Case No.1-10628

Previously, when the user tried to print the Student with Attendance problems - Daily report with the Loss of Credit option on, when the user filled in the criteria of greater than 0 absences, the report would display information. If the user entered in any other criteria with the Loss of credit option on, the report would not display any istudents.

Now, when the user tries to print the Student with Attendance problems - Daily report with the Loss of Credit option on, the report will display the proper students that match the criteria provided on the parameter form.

ATT801R.REP Enrollment & Attendance Summary (MBAEA)

SCR32729 (AEA #689)

CRM Case No.1-14857

Previously Enrollment & Attendance Roster and Enrollment & Attendance Summary reports were not displaying attendance records for Schools with Period Attendance. Now both reports are displaying absences and lates for Period Attendance schools.

COP140P.FMX Student Placed List

SCR32156 (ICR# 335)

CRM Case No.1-12919

A school_user can no longer run COP140R (Co-Op Students Placed report) for other schools because other schools are no longer available as an option in the drop down list "Which School?" from COP140P v4.0.09 (Co-Op Students Placed screen). The only option available in the "Which School?" is the school that the school_user has access to, based on SYS015 (SIS User Maintenance screen).

DMOEXT.FMX Demographic Extract

Enhancement

SCR22671

The Demographic Extract has been modified to allow you to query students from Course Maintenance and/or Standard Courses that have particular course codes in their Course Selections, Credit Details or both. The matching of course codes can be based on Course Codes at the School Level, Standard Courses or Both. When extracting matching data from student records the system considers matches from Courses Selections and/or Credit History.

Using the new Course drop down field you can choose one of three options:

Course Selections - Query courses from Course Maintenance and run an extract against student's Course Selections.

Credits - Query courses from Standard Courses and run extract against student's Credit Details.

Both - Query courses from Standard Courses and Course Maintenance. The extract will run against student's Course Selections and Credit Details.

Previously logic associated to the field "Search Course History for matching?" (yes/no dropdown) related to data entered in the "Teacher", "Courses" and "How Taken" fields. This field has been moved to the bottom portion of the screen (see mockup). Logic relating this function and "Courses" was removed as it is now handled via the new dropdown.

STU148.FMX Look up Course By Course displays a list of courses based on criteria selected on the Demographic Extract Course Tab. When results are displayed on STU148 you may choose to select a result and in doing so the pertinent data is returned to the courses tab (DMOEXT) and displayed for use within an extract to be performed. All functionality regarding querying and results is addressed in section 3 of this document.

**Enhancement
SCR22676**

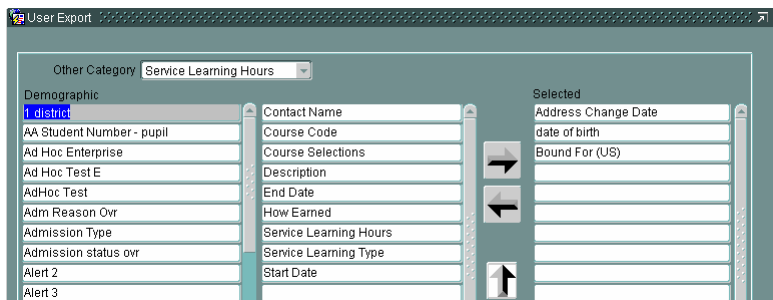
New features have been added to eSIS to track service learning hours by type and student and also to report on this information.

- Service Learning Hours Type has been added to the Demographic Extract and Service Learning Hours information has also been added as a category along with data in the Export Adhoc function.
- STU180 displays total number of Service Learning Hours by Type. It displays the new fields Service Learning Hours By Type label, Type label and Hours label (as well as data if any) on the right bottom.
- A new parameter form (STU180P) and report (STU180R) have been created to run the Service Learning Hours Summary and Detail report.

EXP010.FMX User Export

The following fields have been added within the new category of "Service Learning Hours":

- Contact Name
- Start Date
- End Date
- Service Learning Hours
- Service Learning Type
- How Earned
- Course Code
- Course Selections
- Description

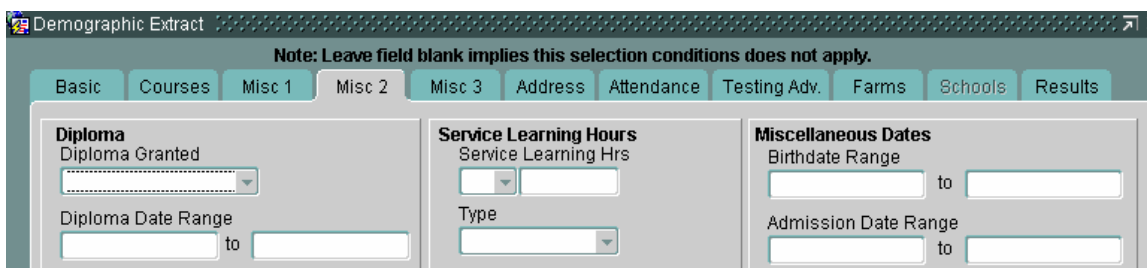


DMOEXT.FMX Demographic Extract

Service Learning Hours:

Type populates from the Service Learning Type Codes list (SYS201).

- If "Hours" is selected and Type is blank, the extract will look for ONLY hours meeting the criteria entered, regardless of type.
- If "Type" is selected and Hours are blank, the extract will look for ONLY that Type regardless of hours.
- If "Type" AND "Hours" are selected then the extract will look for a match of Hours on the Type selected.



Bugs

SCR28943

Previously, when a user accessed DMOEXT through the Export/Adhoc File and selected one school on the SCHOOL tab, the values selected from the Teacher, Counselor/Counsellor and Mentor LOVs (on COURSES tab) displayed in light grey. Also the LOV popup for Counselor/Counsellor contained the heading 'Councillors'.

Now, when a user accesses DMOEXT through the Export/Adhoc File and selects one school (SCHOOL tab), the values selected from LOV's in COURSES tab display in black and the LOV popup title matches the heading Counselor (US) or Counsellor (CAN).

SCR31403 (SCR 17864)

CRM Case No.141-1141

A new function called USER_HAS_ACCESS has been added to check if the user has access to more than one school. If they do, then some items and tabs are disabled (HR1/HR2/Teams on the basic tab, Attendance Reason on the Attendance tab), because items which are dependant upon one particular school cannot be available to the user when doing a multi-school extract.

EXP010.FMX User Export***Bug*****SCR32236**

Previously, when the user went to User Export screen and created a WHERE clause that had the Final Grade Low Range field filled with an 'F', the Final Grade High Range field filled with an 'F' and the course code field filled in with a course, upon trying to create the export an oracle error message would display.

Now, the user can successfully create an export that includes the Final mark in which the WHERE clause has the Final Grade Low Range field filled with an 'F', the Final Grade High Range field filled with an 'F' and the course code field filled in with a course.

OCR Table 7 Statistics FROCR7R.REP**OCR Table8: Disc. of Students without Disabilities FROCR8R.REP****OCR Table9: Disc. of Students with Disabilities FROCR9R.REP****OCR Table 10 Students with Disabilities FROCR10R.REP****OCR Table 11 Additional Disabilities FROCR11R.REP****OCR Table 12B: Testing (High School Graduation) FROCR12R.REP****OCR Table 13: Student Assignments FROCR13R.REP****OCR Table 14 Advanced Placement FROCR14R.REP****OCR Table 15 High School Completers FROCR15R.REP****OCR Table 16: Interscholastic Athletics FROCR16R.REP****SCR32622**

The error "FRM-41214:Unable to run the Report" is no longer received in 10G runtimes only when trying to run the following:

Non Full Year Courses by STDP SCH111P.FMX***Bug*****SCR31201**

Now, all lettering is black, the user can tab to print and exit icons and the hint for the School Year radio button has been changed to "Courses For Which School Year to Display?"

Verification Form Report SCH021R.REP**SCR32399****CRM Case No.1-13932**

Previously, SRON175P was generating multiple records for multi period courses. The program now creates one record per course regardless of the number of periods associated to the course.

GPA Generated SCH104R.REP**General Student Ranking STU436P.FMX*****Enhancements*****SCR24663**

An enhancement has been made to the GPA module to allow a special GPA calculation after Quarter 3 (interim marks) have been posted. It allows multiple marks from the same course length to be weighted and included in the Cumulative GPA - including Courses in Progress calculations in the GPA module. See SYS001.FMX Company Update in this document.

Course Description Verification SCH420R.REP

Enhancements

SCR28535

A Course Designator (for student's academic record) was added to show information pertaining to how a course was taken and a credit was earned. It appears on various forms and reports and can be enforced at the school and student level. See SYS266.FMX Standard Course Detail in this document.

Course Description Verification SCH420R.REP

Course Descriptions SCH421R.REP

Course Descriptions SCH421P.FMX

SCR29898 (#93567)

When running the Course Description Verification report the description area is now showing what has been entered under the Course Catalog. Previously, the description areas only showed what was entered under the Report Card Narrative box, but not what was under the Course Catalog box.

Report of Screening Team SEW161.FMX

SCR32246

An Oracle error (FRM-40735) is no longer incurred when accessing SEW161 from SEW160 with a cross-enrolled student.

Eligibility Detail-Autism Spectrum Disorder SEW410R.REP

SCR29565 (446), SCR31975

CRM Case No.1-12651

The printed report 'Statement of Eligibility for Special Education (Autism Spectrum Disorder 82)' now correctly shows the information that is in the Question 8 of the Autism Eligibility screen (SEW410).

Statement of Eligibility-Hearing Impairment SEW414R.REP

Statement of Eligibility-Hearing Impairment SEW414.FMX

SCR32544

CRM Case No.1-14379

- SEW414.FMX (Statement of Eligibility-Hearing Impairment screen) now states '...pure tone average loss of 50 dbHL' on the third question of 'Page 3' tab. The number 500 has been corrected to read 50.
- SEW414R.REP (Statement of Eligibility-Hearing Impairment report) now displays '...pure tone average loss of 50 dbHL. on the third question. The number 500 has been corrected to read 50.
- As well, the Help-About screen for 'SEW414' has now been corrected to read 'SEW414'.

Student Information System Reports SISRPTS.FMX

SCR32473

CRM Case No.1-14069

When changing an Incident Date/time and Action Date/time to a previous date, the system will validate that the Action Date/time occurs after the Incident Date/Time on Save. Previously, the validation was taking place as the Action Date/time was being changed.

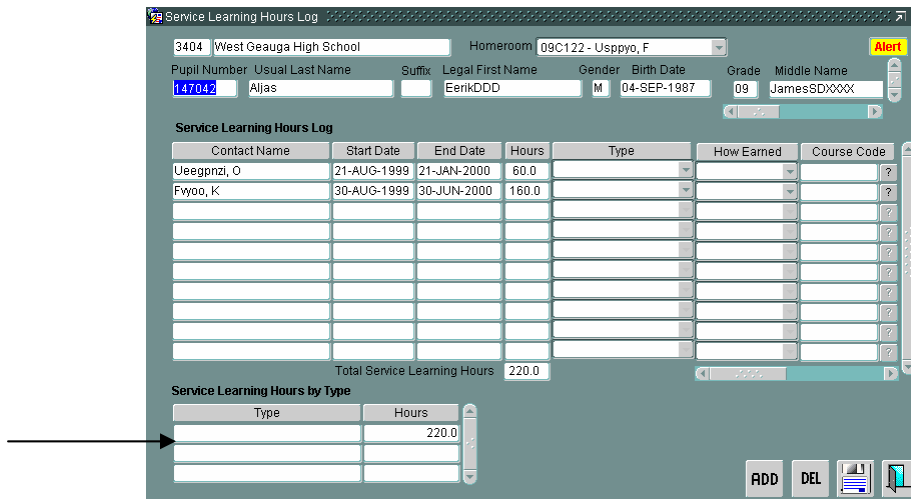
STU180.FMX Service Learning Hours Log
STU180P.FMX Student Service Learning Hours
STU180R.REP Student Service Learning Hours

Enhancement
SCR22676

New features have been added to eSIS to track service learning hours by type and student and also to report on this information.

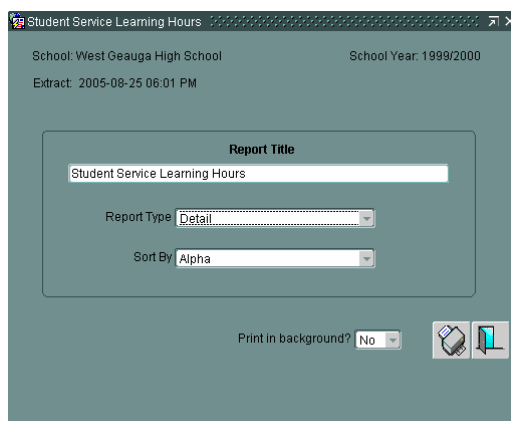
- Service Learning Hours Type has been added to the Demographic Extract and Service Learning Hours information has also been added as a category along with data in the Export Adhoc function.
- STU180 displays total number of Service Learning Hours by Type. It displays the new fields Service Learning Hours By Type label, Type label and Hours label (as well as data if any) on the right bottom.
- A new parameter form (STU180P) and report (STU180R) have been created to run the Service Learning Hours Summary and Detail report.

STU180.FMX Service Learning Hours Log



Field Name	Description
Type	Displays a list of each type of service that is associated to the current student. If more than two "Types" of service are associated to the current student the list will display the first two and a scroll bar will allow the user to view more.
Hours	Calculates and display the total hours for each "Type" of service for the current student. As service hours are added or deleted (by type), the system will recalculate the values in the "Hours" field when the user presses the save button.

STU180P.FMX Student Service Learning Hours



Field Name	Description
Report Type	Dropdown list that will allow the user to select the report to be run, either the summary or detail. If Summary is selected the system will run and print the summary view of this report. If Detail is selected the system will run and print the detailed view of this report.
Sort By	Dropdown list that will allow the user to select how the report will be sorted. Alpha, Alpha by Grade, Pupil Number or Pupil Number by Grade.

STU180R.REP Student Service Learning Hours

This report displays total Service Learning Hours for each student in the summary view. The detail view will also include a breakdown of Service Learning Hours by Type and Hours per type for each student listed.

If Report Type selected is “Detail” on the parameter form, the report will be printed to include SSL Type and Type Hours for each student (detail view).

If Report Type selected is “Summary” on the parameter form, the report will be printed excluding these details (summary view).

Field Name	Description
Report Title	Displays the title of the report as entered on the parameter form.
School Name	Displays the name of the school the report is being run for.
School Number	Displays the number of the school the report is being run for.
Pupil Number	Pupil Number of the student
Last Name/First Name	The name of the student.
Grade	Current grade of the student.
Total Service Learning Hours	Total number hours for all types of service learning for the student.
SSL Type	Displays each student service learning type associated to the student.
Type Hours	Displays the total number of hours associated to each service learning type listed for the student.

Student Attendance Intervention Correspondence Summary STU181R.REP SCR32111

Previously, when a user selected the Hotprint icon to print this report and no data was found to match, a popup message relayed: "FRM41214: Unable to run Report". Now, selecting the Hotprint icon with no data to match allows the report to run (for verification).

Immunization List STU232P.FMX

Bug

SCR32618

A 10G Oracle form error is no longer generated on clicking the "Print" Icon.

Registration Labels STU275R.REP

Enhancement

SCR29176

The Student's middle name has been added to the Registration label.

Screening Exception Report STU315R.REP

Bugs

SCR32174

CRM Case No.1-13125

Previously, this report displayed only the values Pass, Fail or Unknown for the Pass/Fail column. The value Unknown was printed for any result (from STU300, Nurse's Screenings) that was not Pass or Fail. Now, this report displays the actual Result of the screening, that is, Unknown is no longer a value printed unless it is actually inputted as a screening result.

Promotion/Retention Detail (Post YET) STU407R.REP

Bug

SCR32190

CRM Case No.1-13227

Previously, when printing the STU407R -Promotion/Retention Detail (Post YET), an error message from the Queue Manager comes up: Terminated with Error: REP-1401: 'cf_retention_readonformula:'Fatal PL/SQL error occurred. ORA-06502: PL/SQL: numeric or value error. This error message was generated because the 'Retention Reason' of the report only accommodates 30 characters and some Retention Reasons were more than 30 characters.

The 'Retention Reason' text field of the report STU407R v4.0.08 - Promotion/Retention Detail (Post YET) was modified so that it can accommodate more than 30 characters; it can now hold up to 60 characters. Now the report will run successfully without any error message, even if the 'Retention Reason' is more than 30 characters. Retention Reason is pulled from SYS208 system code.

Letters STU710P.FMX

SCR32473

CRM Case No.1-14069

When changing an Incident Date/time and Action Date/time to a previous date, the system will validate that the Action Date/time occurs after the Incident Date/Time on Save. Previously, the validation was taking place as the Action Date/time was being changed.

Achievement Labels STU840R.REP

SCR32009

CRM Case No.1-12650

The Achievement Labels report can now be run without encountering an Oracle error.

Bus Route Student Report SYS515R.REP**SCR31985****CRM Case No.1-12648**

Now when a school_user with access to just one school, runs the SYS515R (Bus Route Student Report), the report will only display the bus routes for the students of the one school that the school_user has access to.

Client Specific Reports**ADC450P.FMX Report Card (ACSD)****ADC450R.REP Report Card (ACSD)*****Enhancement*****SCR27881**

An option has been added to the parameter form (ADC450P) for the Secondary Report Card, ADC450R. This option allows you to include course information from cross-enrolled schools in the same district where the reporting period end dates, course lengths, and course length start dates match the reporting period end dates, course lengths, and course length start dates of the school running the report.

When the option is selected, courses taken at cross-enrolled schools in the same district during the current school year display on the report card along with the following related information:

- Teacher name for these courses
- Marks received for these courses
- Comments received for these courses
- Absences for these courses
- Course credit information for these courses

When the option is not selected, the program uses the current logic already in place.

Bug**SCR32656****CRM Case No.1-14479**

The Date format issue no longer exists on the report card (ADC450R).

BLP001R.REP Bend La-Pine/Redmond Report Card - Secondary***Bug*****SCR32537 (534)****CRM Case No.1-14353**

Authorized school absences no longer show on student report cards.

BLP454R.REP Bend La-Pine/Redmond Transcript - Secondary***Bugs*****SCR32601 (1-13921)****CRM Case No.114-14533**

The report is now showing Yearly Attendance. Previously the Bend LaPine Secondary Transcript did not show Yearly Attendance due to there being one entry in the Homeroom History table as 8th grade and year 2003.

SCR31771**CRM Case No.1-12318**

Previously, when checking 'Show weighted GPA and rank' on parameter form, not all courses having non-null academic level were appearing in bold on the transcript. Now when checking 'Show weighted GPA and rank' on the parameter form, all courses having non-null academic level are appearing in bold on the transcript.

SCR32076**CRM Case No.1-11867**

Previously courses from credit history and courses from course selections with final marks assigned were not being grouped together, unlike prior versions. This has been resolved: Courses are now grouped by year and grade.

BPS800R.REP Enrollment and Attendance Roster (BPS)***Bug*****SCR32059 (504)****CRM Case No.1-12891**

The Enrolment and Attendance Roster report is now displaying all student absences.

DCPS01P.FMX DC - Secondary Report Card**SCR32312****CRM Case No.1-13503**

Previously the Secondary Report Card did not show the 9 week final and exam marks under the appropriate column when the Report Card was run outside of the Reporting Date attached to the 9 Week Course s Reporting Period. Now the Report Card is showing the correct marks under the appropriate columns for a 9 week course.

DCPS454P.FMX District of Columbia Transcript**DCPS454R.REP District of Columbia Transcript*****Bugs*****SCR31577**

Previously the Letter of Understanding in DCPS454R did not indicate the potential credits for courses in progress/scheduled. Now total credit values of courses toward certain Diploma Category will display under Units in Prog/Sched column.

SCR32398 (542)**CRM Case No.1-13856**

Previously, on the DCPS Transcript parameter form (DCPS454P), when the option "Include Courses in Progress, from reporting date" was selected, the drop-down box pulled the Reporting Dates from the Mark Reporting System Code, Standard Reporting Dates (SYS595) and not the School's Reporting Dates (SCH102) setup in the GPA Module. Now the drop-down box will pull the Reporting Dates from School Reporting Dates (SCH102) setup in GPA Module.

SCR31980 (506)**CRM Case No.1-12562**

Previously all courses in Credit History and Course Selection screen would display on DCPS Transcript. Now the only records in the students Credit History file that will be displayed on the transcript are those where credits. HIGH_SCHOOL_CREDIT = 'Y'; the only records in the students current COURSE Selections that will be displayed on the transcript are those where course.HIGH_SCHOOL_CREDIT = 'Y'.

SCR32357 (541)**CRM Case No.1-13852**

Previously the GPA value appearing in DCPS454R was pulling the 'stored' GPA from the student's table. Now the GPA for each section of courses, as well as for the student overall, will be calculated within the report.

SCR32587 (555)**CRM Case No.1-14486**

Previously the school address on Page 2 of the transcript was not being pulled from the School address field, but from the school mailing address field. Now it is being pulled correctly.

SCR32586 (553)**CRM Case No.1-14482**

Previously Credit Earned and Total did not display any value on transcript. Now those values will be populated on the transcript.

EMIS191.FMX EMIS Extract - FY2004***Enhancement*****SCR32225**

The AAL_EMIS_ATT_DEMO scripts have been modified to add a new field GI500 - Student Admission Reason (column 232) - to the Ohio Demographic extract. The size of the trailing filler has also been modified accordingly.

Bugs**SCR32369****CRM Case No.1-13810**

The cursor was changed to a cursor for loop to avoid running into an infinite loop while processing Pre-School Students.

SCR32716**CRM Case No.1-14659**

Previously, the Ohio EMIS State Reporting Student Program (GQ) extract was not reporting all programs listed in the student's SPED Lite Least Restrictive Environment and Related Service tabs. Now, the EMIS extract parameter form EMIS191 has been modified and all programs listed under Least Restricted Environment and Related Services without an End Date are included in the extract.

SCR32541**CRM Case No.1-14308**

Previously, for Ohio EMIS State Reporting, when the School radio option was selected but the field was left NULL in Specific Course Section Maintenance (SROH070), the Course Master (CN) extract on EMIS191 was reporting all zeros (0) in CN110 (columns 64-69). Now EMIS191 has been modified and CN110 is reporting the IRN of the current school as the default.

SCR32594**CRM Case No.1-14484**

This is The OHIO State specific extract.
Please see spec for details.

SCR32493**CRM Case No. - 1-13485**

Previously, in the Ohio EMIS State Reporting Student Attendance extract, the Retained Status (GK330) data was not reporting the correct Retention Reason code. Now, the AAL_EMIS_ATT_DEMO scripts have been modified in order to change the retention reason selection logic to select the appropriate promotion record and report the Retention Reason code in GK330 (column 95).

SCR32423**CRM Case No.1-13977**

Previously, the Ohio EMIS CN (Course Master) extract was not reporting the College/University IRN indicated in SROH070 screen correctly in CN110 (columns 64-69). Now EMIS191 has been modified and the IRN data is being reported correctly.

SCR32363**CRM Case No.1-13857**

Student Program extract for October reporting period now displays list of students, not just one student as it was in previous version of EMIS Extract - FY2004 form.

SCR32484**CRM Case No. - 1-13486**

Previously, in the Ohio EMIS State Reporting Student Program extract, the Provider IRN (GQ090) data was reported in the wrong column positions. Now, the EMIS191 Parameter form has been modified and the Provider IRN (GQ090) is now correctly reported in columns 53 - 58 of the extract file.

MRBC002.FMX TRAX Interface**SCR32321****CRM Case No.1-13782**

This is BC specific extract. Please see spec for details.

SCR32557**CRM Case No.1-14407**

This is BC specific extract. Please see spec for details.

SCR32488**CRM Case No.1-14247**

Changed in proc_crse_cred, crse_status to be always 'A'.
Changed logic according to new specs. Get characters from 6 to 8 from external code of course instead of the last 3 characters

NC450RB.REP Report Card - Secondary (NC)**NC450R.REP North Carolina Secondary Report Card****SCR32168**

Previously the course block title, course code and name, and the word Homeroom were truncated due to font size. Now this problem is resolved. The line of course code and name can accommodate up to 26 characters.

OL_SR_PFORM State Report Library File**SCR32444****CRM Case No.1-13364**

Previously the following State Reporting forms that used the library OL_SR_PFORM.olb on 10G could not be compiled. This affected the 10G Compile of

- SRUT001P
- SRON175P
- SRWI006P

The library has now been fixed and the 10G compiles are now successful.

ONT470P.FMX Ontario Status Sheets**ONT470R.REP Ontario Status Sheets****SCR32165 (38466)****CRM Case No.1-13273**

A spelling error for the word "Successfully" on Student Status report - ONT470 - has been corrected.

SCR31097**CRM Case No.1-11383**

- The previous credits now display when the report is run for the first time from the 'Hot Print' on the 'Start' screen
- There is now only one page to the report

SCH613R.REP September Report E - Enrolment by Entry into Canada
SCH615R.REP September Elementary Report B - Enrolment by Grade & Gender
SCH665R.REP September Report J - Education for Exceptional Students
SCH606R.REP September Report M - Microcomputers in Schools
SCH618R.REP September Report - # (ON)

Bug

SCR32534

CRM Case No.1-14211

The reports were changed to accommodate school ID numbers with > 4 characters and Board names > 40 characters.

SCH613R.REP September Report E - Enrolment by Entry into Canada
SCR32659

CRM Case No.1-14650

Package was missed in REL80.

SCH665R.REP September Report J - Education for Exceptional Students
SCH605R.REP September Elementary Report F - French as a Second Language

SCR32209

CRM Case No.1-13433

The size of the variable for the school number was increased. The small size of the variable was causing a failure to generate the report.

SEWBV04P.FMX Change of Service Delivery

Bugs

SCR30516

CRM Case No. - 1-10789

- Previously when a user made a change to a service (added, deleted or changed information) and clicked the Change in Services checkbox at the bottom of the screen, a checkmark went to the checkbox along with the system date and time stamp. When another user with appropriate access went to this SEWBV04P they could only see the change that the first user did, but could not see the checkmark on the Change in Services checkbox as well as the system date and time stamp. The only user that could see the checkmark along with the system date and time stamp was the user that created it.
- The date in the 'Change in Services Meeting Date' was retaining the date from the previous change in services even if the District MIS for that previous change had been completed.
- NOW when a user makes a change to a service (either adds, deletes or changes information) and clicks the Change in Services checkbox at the bottom of the screen, a checkmark goes to the checkbox along with the system date and time stamp. When another user with appropriate access goes to SEWBV04P they can now see the change that the first user did, and can also see the checkmark on the Change in Services checkbox as well as the system date and time stamp. Now, all users with appropriate access can see the change that the first user did, and can also see the checkmark on the Change in Services checkbox as well as the system date and time stamp.
- The date in the 'Change in Services Meeting Date' is no longer retaining the date from the previous change in services if the District MIS for that previous change has been completed. If the District MIS for that previous change has been completed, the 'Change in Services Meeting Date' becomes blank.

See the document Special Education Advanced Blue Valley (Kansas).

SCR30552**CRM Case No. - 1-10627**

Previously the Change of Service Delivery screen did not automatically calculate the weeks of service in the 'Wks' field. Now it automatically calculates the weeks of service in the 'Wks' field, as soon as the 'End Date' is entered. Note: The date entered in the Start Date and End Date should be within the school calendar and the dates should have a Week Number assigned to it.

See the document Special Education Advanced Blue Valley (Kansas).

SEWOH20P.FMX PR-02 Parent Invitation**SCR30540****CRM Case No.1-10843**

Previously on the screens, PR-02: Purpose of Meeting and PR-02: Invitees, the date functions was displayed as '...' sign.

Now the date functions display as '+' sign.

SEWOH30.FMX Manifestation Determination Review**SCR30539****CRM Case No.1-10844**

Previously on the screen PR-03 Manifestation Determination Review, the date function was displayed as '...' sign. Now the date function is now displayed as '+' sign.

SCR31541

- The error message 'Error. SQL statement return no rows for list item, 'sew_strategies.referral;. (referral)' is no longer generated when a user navigates to the 'Strategies Tried To Date'
- A user can now Add a referral.

SEWOH60R.REP PR-06 ETR**SCR32589****CRM Case No.1-14446**

The page overflow or font overlapping problem has now been fixed. The choice checked in the ETR Part C - Section C in the form SEWOH62 (PR-06 Evaluation Team Report Part C - Criteria for) is now correctly displayed.

SEWOH70.FMX PR-07 Individualized Education Program (part 1)**SCR32199 (58592)****CRM Case No.1-13351**

Previously in the 'Needs/Goals/Services' tab of PR-07 Individualized Education Program (part 1) screen, when a user Added a Goal and Saved it, without filling out the 'Needs' section first, an Oracle message '40508 - Unable to insert a record' came up.

Now when a user tries to Add a Goal, without filling out the 'Needs' section first, a hint message 'You cannot create records without parent record' comes up.

NOTE: The 'Needs' section has to be filled out first before Adding a Goal.

SEWOR50.FMX IEP Section 1 (OR)
SEWOR60.FMX IEP Section 3 (OR)
SEWOR50R.REP Oregon IEP
SEWOR70.FMX IEP Development
SEWBV890.FMX State Assessment Codes
SCR22999 (52)

Enhancement

Previously SEWOR70 and SEWOR50 had a label 'Reevaluation Date' as one of the Field names. Now the 'Reevaluation Date' fields have been replaced with 'Annual Review Date'. See the document Oregon SPED.

SEWOR50R.REP Oregon IEP

SCR32340

CRM Case No.1-13835

Previously when a user selected an IEP# for a selected student and then navigated by using the arrow in the lower left corner, it took the user through a loop of screens. User navigated from SEWOR50, SEWOR55, SEWOR60, SEWOR65, and then back to SEWOR50.

When the user selected another IEP# for the same student and navigated from SEWOR50, SEWOR55, SEWOR60, SEWOR65, and then back to SEWOR50, a different IEP # from the last one selected was displayed.

Now when a user selects an IEP# for a selected student and then navigates by using the arrow in the lower left corner, this takes the user through a loop of screens. User navigates from SEWOR50, SEWOR55, SEWOR60, SEWOR65, and then back to SEWOR50. When the user selects another IEP# for the same student and navigates from SEWOR50, SEWOR55, SEWOR60, SEWOR65, and then back to SEWOR50, the same IEP # as the last one selected is now being displayed.

SCR31974

CRM Case No.1-12667

The printed report now prints all the 50 characters of the text from 'Services Areas' textbox for the Service 'Supp. Aids/Services: Modifications & Accommodations' .

SEWOR50.FMX IEP Section 1 (OR)

SEWOR55.FMX IEP Section 2 (OR)

SCR31970

CRM Case No.1-12655

SEWOR50 - Users are no longer allowed to scroll to the 'Annual Goals' tab without creating an IEP in the 'General Info.' tab. An error message 'Please enter info before advancing to the next screen' displays.

SEWOR55 - When users Add the first IEP for a student and query in the 'Annual Goals' tab, a list of Goals no longer displays. The Annual Goals are now referenced to the IEP # only. If user queries the Annual Goals for an IEP, user will only see the Annual Goals for that IEP number.

SEWCODS.FMX Special Education System Codes
SEWOR66.FMX Oregon IEP - SECC Supplementary Data
SEWOR91.FMX SECC Supplemental Data - Serving Agency Codes
SEWOR92.FMX SECC Supplemental Data - Enrollment Type Codes

Enhancement

SCR28444

An enhancement has been developed to store/track SECC supplemental data within the IEP for each student. Data pertaining to Federal Placement, Serving Agency, Enrolment Type and SPED Legal District of Residence may now be stored and tracked. This new form can be found in SEWOR50 (IEP section 5) accessed by querying for a student's IEP and using the "Next" arrow until reaching IEP Section 5.

New SEW System Codes forms have been added for Serving Agency and Enrolment Type. SPED Legal District of Residence draws from STU105 student information. Federal placement information comes from an existing systems codes form.

SEWWP70.FMX Special Education, Related Services

Bugs

SCR27335

When entering data into the 'weeks' field then tabb, the cursor now goes down to the next line to enter another service.

SCR32004

An Oracle error is no longer generated using 10g runtimes.

SJ454P.FMX SJ- Transcript

SCR32591

CRM Case No.1-14447

Multi-period courses were randomly printing twice on the transcript. The program was modified to prevent this.

SLC001P.FMX Salt Lake City Midterm/Report Card

SLC001R.REP Salt Lake City Midterm/Report Card

SCR26423

This report card format will be used by all middle and high schools to cover the generation of Report Cards, Progress Reports, and Mid-Term Reports. The high school report card will provide the following information:

Title Box – located in the top right hand corner of the report document

Reporting Period and Student Information

Report Card Section:

- Period – course section maintenance
- Course description – course section maintenance
- Teacher – course section maintenance
- Grade period – reporting period
- Grade – Mark entry for the student.
- Scholarship Column – accumulation of credits to date (0.25 credits per quarter)
- Citizenship Column – accumulation of citizenship credits to date (0.25 credits per quarter)
- Current Attendance – Will list the total number of Absences and Tardies per quarter (two columns)
- Comment (five columns separated by vertical line) to store the numerical comment associated with each course.

Grade Point Average (GPA): Value will be the average of all the reporting periods.

Grade Codes: this area lists the grade code description and corresponding GPA value.

Citizenship Code Descriptions: This static information area defines each citizenship code and is located on the right hand side of the

School Messages: this is a prompted free form text area that can be entered before the report card is run. (such as a prompting screen)

Comment Code Key: Located on the right hand side of the screen

Graduation Summary (High schools only) : This area would display the graduation requirements for the student based on their diploma type.

Information displayed: (left hand side of the form)

- Graduate Requirements for the diploma type selected, which is a list of all the courses
- Credits required for graduation
- Credits earned to date
- Balance of credits remaining to be earned.

GPA Information: This information will be located on the left hand side of the report. Listed below are the information that is required:

- Class Rank
- Class Size
- Percentile out of the class
- Date Ranked (mm/dd/yyyy)
- Total Cumulative GPA

Standardized Testing: a listing of all the tests required for graduation under the district standards: Listed below are the information required.

Parents name and address:

Intermediate School Report Card:

With these report cards, the structure and information format remains the same as the one for all high schools, with the exception of the graduation summary; GPA information, and Standardized testing information.

SCR32693

CRM Case No.1-14750

The Salt Lake City Report Card now prints the correct credit value attached to the course if a final passing mark exists. Credit values are no longer duplicated if more than one student has the same course.

SRAZ001.FMX State Reporting Module - SAIS Reporting (AZ)

Bugs

SCR32671 (AZ110105_AZIEP Indicator)

CRM Case No.1-14691

- If a student is enrolled in an Arizona Early Intervention Program and an external code of AzEIP delivery level in System Table equal "1" – an AzEIP Indicator will display "1". Otherwise the AzEIP Indicator will display "0".
- A CHANGE record for Delivery Level Code is created in SPED_EXCEPTIONALITY_LOG when a SPED Eligibility (including Delivery Level) assigning to the student using SPECIAL EDUCATION LITE (SED900) form. As a result ADD (with AzEIP = 0) and CHANGE (with AzEIP = 1) will be created. "

SCR32748

CRM Case No.1-14717

DELETE and ADD transactions for Student Assessment (Tr.012) will be created when assessment data is changed for selected sub tests. Transactions will be created only for Oral, Reading and Writing sub tests.

SCR32413 (AZ101105_2)

CRM Case No.1-13967

The "State Code" of Grade ("GRADE" system table) will be reported for the SPED Service Participation Transaction (#14) for SPED Grade.

SCR32543 (AZ101905_021)

CRM Case No. - 1-14347

An "Initial IEP" transaction will be generated for all students with specific SPED Eligibilities without any age restrictions.

SRFL070.FMX FL SR spec. Course Maintenance

SCR32171

CRM Case No. - 1-12862

When new MTB records are created, a record will now be created in the SR table with the master ID. Defaults Scheduling Method to 'S', Facility Type to '00' (School District Facility) and Highly Qualified Teacher checked for all records having a teacher id.

SRFL165.FMX Florida State: Pullouts

SCR32360

CRM Case No. - 1-13537

In the event that the students' schedule is altered after pullouts are composed, the form will now instruct the user to delete all pullouts. Once this is done, new pullouts can be composed for the student.

SRFLFAST.FMX SRFL - FASTER Interface

SCR32405

CRM Case No. - 1-13914

FASTER will now create records in the same S or I format as the headers during multiple style runs.

SRFLSC.FMX SRFL School Control

SCR32372

CRM Case No.1-12282

If the FTE is > 0.4990 and < 0.5 then FTE will be adjusted to 0.5.

For Pullout, the course the student is pulled into is the pullout course showing period 88.

SRFLCS1.FMX Florida State Specific Course Selections Info.

SCR31499

The following four fields were added to the State Details screen SRFLCS1 – Florida State Specific Course Selection Info Screen (READ-ONLY FIELDS):

- Actual Minutes – the actual minutes for the student’s scheduled courses
- FTE Minutes –the minutes used for the FTE calculation
- FTE – the FTE that is reported to the State.
- FEFP – represents the student’s FEFP number

A school user can now refresh a student’s or all students’ FTE/FEFP information by clicking on the “Refresh” button on SRFLCS1 – Florida State Specific Course Selection Info Screen.

The STATE DETAILS button was moved to the Navigate popup screen.

A Parameter Form with filter options and options for which reports to run is available.

- Detail Report
- FEFP Summary Report
- FTE Summary Report

The report parameter form also has an option to show student detail information to facilitate error checking / validation.

The detail report includes the following information:

The first line of the header shall contain (1) Pupil Number, (2) Ministry Number, (3) Student Name (Surname, First name), (4) School, (5) Grade (6) Homeroom, (7) Delivery level and (8) LEP Status.

The second Header contains (1) Primary Exceptionality, (2) Listing of the other exceptionalities, (3) Primary Exceptionality referral date (referral tab), Primary Exceptionality - Original Eval date (referral tab), Primary Exceptionality -Eligibility date (eligibility tab), Primary Exceptionality - Placement date (related services tab), Primary Exceptionality - Plan date (important dates), Primary Exceptionality -Re-Eval date (important dates) and Dismissal Date = End Date (eligibility tab). This Special Education data will be omitted for non-SPED students

The Detail report next displays the student’s (1) course number, (2) Section, (3) Title, (4) Period (5) FEFP, (5) Actual Minutes, (6) Minutes used for FTE calculations (7) Reported FTE and (7) Message area. The message area will alert the user when (1) FTE less than 0.500 and (2) FTE greater than 0.5. The following errors are errors to be displayed to the user (1) ***** FTE is < 0.5 **** ERROR and (2) ***** FTE is > 0.5 **** ERROR.

SCR32461

CRM Case No. - 1-14161

- You can now select desired survey. The Survey will default to the next date certain.
- The Matrix items have been moved to the first items to rectify the data mismatch problem.

SCR32560

Student courses LEP instructional strategy codes will now receive an FEFP code of 130 when recalculating matrix values.

SRFLSTU1.FMX Florida Student Information I
SRFLDSET.FMX SRFL District Setup Screen
SRFLSC.FMX SRFL School Control
SRFLFDPE.FMX SRFL Format Data Display / Edit
SRFLDFFC.FMX SRFL District Format File Creation
SCR26019

This enhancement includes the required changes published by the FDOE and how they impact the existing Florida State Reporting Formats by individual data element.

SRIA001P.FMX Iowa Student Id

SCR32459 (649)

CRM Case No. - 1-14139

The State ID number import is now importing the 10 digit number to the eSIS without any ORACLE errors.

SCR32536 (659)

CRM Case No. - 1-14341

If State Code of Grade (System Code Table) is blank/Null - the student will now be excluded from the extraction

SRIA002P.FMX SRIA - Project EASIER

SCR32352

The header record, element H0060 - Delimiter is now populated with 'delimiter=0x09'. Previously it was populated with 'delimiter=0x99'.

SCR32554 (661)

CRM Case No. - 1-14365

Students whose latest Registration date to the district is greater than the end date of the extract will not be included in the extract. A Student must have been registered prior to the Reporting Period End Date.

SCR32657

CRM Case No. - 1-14669

A correction has been made to the logic regarding 2.5.6 of the fall changes specification regarding selection of active students. All students who are registered on the End Date of the date range will be selected, even if the registration is before the start the date range on the parameter form.

SCR32367

CRM Case No. - 1-13860

The length of 'D0470 - Type of ELL English Language Instructional Program' element changed from 1 to 2.

SCR32522 (658)

CRM Case No.1-14329

The number of records count for the end of file record in the export file has been corrected.

SCR32730 (690)

CRM Case No.1-14880

The latest change for Admission Status will now be reported, not the first change.

SCR32752 (691)

CRM Case No.1-14927

The Legal District of residence in the EASIER extract will be the same as the Legal District field of residence on STU105 with the label 'Legal District of Res'.

SRIA010.FMX Perkins Information1

SCR32326

A 10G Oracle form error is no longer generated upon "Save".

SRIL001P.FMX ISBE 87-03 Fall Housing Report

SRILI001R.REP IL - ISBE 87-03 Fall Housing Report

SRIL004R.FMX SRIL-Fall Housing Detail Report

SCR32521

CRM Case No.1-14198

- The students will be excluded from report if they were withdrawn as of the Effective Date on the parameter form.
- Students that were registered on the Effective Date on parameter form will be included in the report.

SRIL300P.FMX SRIL-ISBE

SCR29633, SCR29636

See the document Illinois State ID Demographic Enrollment Export Import.

SRIL442R.REP Yearly Attendance Cards (IL)

SCR32344

CRM Case No. -1-13534

The report now shows the months from Jul-01 of year to Jul-01 of (year+1)

SRKS002.FMX Kansas KIDS Student Generated Information

SCR32354

CRM Case No. - 1-13866

Element D42 will now report the exit date for ESOL students based on the proficient exit reason listed on the parameter FORM even if the END DATE is less than the TO date.

SCR32407

CRM Case No. - 1-13933

If element D41 (ESOL Program Participant) equal '0' then all the ESOL detail fields (D38, D39, D40, D42, D43) are blank.

SRKSMIS1.FMX KS MIS File Transfer

SCR31497

A 10G specific error trying to run SRKSMIS1 has been fixed. There is now no Oracle error when using this form.

SR0H040.FMX Ohio School Specific Info.

SCR32112

The screen information will now display when the user enters the screen.

SRON104R.REP September Report (U) - Number of Special Education Graduates**SCH603R.REP September Secondary Report G - Native Language****SCR32547****CRM Case No.1-14282**

Section U and G reports were changed to accomodate school number values of greater than 4 characters

SRON175P.FMX MRON - EQAO Grade 9 Assessment Math**SCR31399**

EQAO has introduced the Student Data Collection (SDC) process this year (2005) for all assessments. eSIS has created this form to allow school boards to submit data electronically instead of requiring school staff to provide the information on paper.

SCR32390**CRM Case No. -1-13943**

The Available Grade 9 Math Course list now displays the available courses according to the Run Period. The Winter period will display on Semester 1 courses while the Spring period will display Semester 0 and Semester 2 courses.

SCR32428 (31398 EQAO Gr 9 Math specs)**CRM Case No.72-14057**

Enhancements for Ontario ministry reporting - EQAO have been completed.

SROR030P.FMX ADM Collection**SROR900.FMX Secure Student ID Export/Import (OR)****SCR29250**

Changes were made for the Sped flag in field 35. The SPED advanced Eligibility Start date uses the new column CURRENT ELIGIBILITY DATE.

SROR104P.FMX Early Leavers Report (SROR)**SCR29795**

Changes were made for the early leavers in regards to as of withdrawal rules and SPED effective dates.

SCR32580**CRM Case No.1-12533**

The withdraw category code is now two characters padded with a left 0 at pos 913 of file and 580 of test file. The report is also the same.

SCR32593**CRM Case No.1-14514**

A hard coded date format for rescinds was resulting in an error. This has been fixed.

SROR105P.FMX LEP Program (SROR)**SCR32455**

SROR105P now compiles for 10G.

SCR31593**CRM Case No. 1-11913**

The report was changed to read all tests that are imported via SYS920

SCR32325

- An ORACLE error is no longer generated for SCHOOL user.
- SCHOOL user is able to select only the school, that he has access, to run the report.

SROR125P.FMX Student Count by Grade/Ethnicity (OR)**SCR26356**

See the Fall Membership document.

SCR32512**CRM Case No. 1-14152**

For both the file and the report, the grade will now be reported from STU105.

SROR211R.REP Suspensions-Expulsions-Truancy(SET)-Detail**SROR220P.FMX SET - Suspensions Expulsions Truancy Collection****SCR32050****CRM Case No. – 1-12698**

- The layout of the report was changed.
- Incidents and truancy will now sort by school, the SET code the user enters, and the student name.
- The totals for code and school are reported at the end of each section.

SROR250P.FMX High School Completers Report (OR)**SROR250R.REP High School Completers Report (OR)****SCR32611**

Fields 9 - 12 in Extract File will report BSID number.

SCR32679**CRM Case No.166-14767**

In the event a student was in a school that ended after YET, the school end date was being used to get the students grade for the previous year. Since this date is POST YET, the students' grade used would be the grade YET transitioned them to. Grade 11 to Grade 12 and Grade 12 to Grade GR. Students who began the year in grade eleven were considered grade 12 by the run date. The same for students who began the year in grade 12 and were graduated by the run date. This led to students being erroneously included and excluded from the selection. Changes have been made to replace using the maximum school End Date with the students' school of enrolment End Date, which is prior to the YET run date.

SCR32418**CRM Case No.1-13173**

Verification mode and Test File check boxes have been added to the parameter form for High School Completers Report.

SROR250R.REP High School Completers Report (OR)
SROR251R.REP Oregon State High School Completer Detail
SCR32578

CRM Case No.1-14118

See the document Oregon High School Completers Report.

SROR905.FMX Assessment Collection SMF Export (OR)

SCR32563

CRM Case No.1-13112

- When selecting a specific school and using the query mode to select Courses, multiple occurrences of the same Course-Section will no longer appear.
- The record count at end of Output file now matches number of records created on the form.

SRUT001P.FMX SRUT - Student Record Collection

SCR32388

CRM Case No. – 1-13989, CRM Case No. – 1-14022

eSIS now checks for the student's course to see where they are taking the course by determining whether the course is a home school course or a cross enrolled course.

SCR32486

CRM Case No.1-14242

The logic has been changed for creating scam records for active sped students according to their home school and cross enrolled schools.

SCR32517

CRM Case No.1-14309

The parameter form was changed to include a record counter as well as a new button which when pressed will recreate the export file without needing to re-run the extraction of the student data.

SCR32426

CRM Case No. – 1-14047

The Phone number Validation/Edit check has been removed. Now the Validation message will not be created when a phone number is null in eSIS.

SCR32462

CRM Case No.

- The course Entry Date was changed to the registration date when the Course date was before the student was registered.
- Changed the course entry date to the registration date when the Course date was blank.

SCR32431

The export file determines if there is a duplicate teacher name between teachers 1, teacher 2 and teacher 3. It will report only non duplicated teachers in the export file. All teacher information will be displayed in the view regardless of whether it is duplicated or not.

SCR32487**CRM Case No.1-14254, 1-14295**

AC records are no longer missing for Elementary Schools. Previously Students who did not have an enrollment record in the current school year did not have AC records created. When creating AC the verification of the valid enrollment record has been modified for creation of the AC records.

Duplicate AC record for High Schools

Previously an AC record was created for each cross -enrolled student. This has now been change to verify if the timetable number has already been created for the AC record.

Missing Semester length for cross enrolled student in a High School

Previously an AC record was created for each cross -enrolled student but the semester length was missing. This has now been change to update the semester length from the cross enrolled school.

SRVA001P.FMX Student Record Collection**SCR30252****CRM Case No. – 1-11572**

See the document Student Record Collection.

SCR28584

The program was changed to look only at the admission records where effective date is on or after the earliest school schedule date for any school in the current district. Therefore, the correct grade and days present are now reported.

SRWA501.FMX P105A School Enrollment Report**SCR31981**

A 10G Oracle form error is no longer generated when opening this form.

SRWA548P.FMX SRWA - New Transcript**SRWA548R.REP SRWA - New Transcript****SCR29884****CRM Case No. – 1-12288**

A Washington State Standardized Transcript has been created.

SRWI006P.FMX Wisconsin ISES**SCR29414**

A enhancement has be made in regards to the Enrollment element. Now a comparison will be done to see if there is a match between eSIS and the baseline file. If there is no match the Enrollment date in the baseline file with be used in the extract.

SCR32296

Wisconsin State reporting for ICESS had changes made.

STU260.FMX VEIS Reporting (NC)**SCR32072**

An Oracle error is no longer generated using 10g runtimes.

STU751R.REP Ontario Student Transcript**SCR30482****CRM Case No.1-10565**

Students will be displayed in Alpha sort order if it is selected on the parameter form for the Official or Non-Official paper for OST.

SYS603.FMX Program Instructional Categories
STU622.FMX Program Instructional Hours by Category
CODESR_P.REP System Codes - Programs Category
SCR30097

This is the new Alternate Ed Part-time screen for ADM input for hours. Please see the ADM Collections document.

SYS985.FMX SSID Batch Files (OH)

SCR32430 (SCR31495)

CRM Case No.1-14019

Delimiters (,) after The Admission Reason were added to resolve the file to have too few columns/fields when sent up to IBM.

TAC004R.REP Tacoma Middle School Report Card

SCR32481 (542)

CRM Case No.1-14179

Previously when attempting to run the Middle School Report Card (TAC004R), the report failed due to Character Buffer violation. Now the width of the fields CP_Comment_text2, CP_Comment_text3, CP_Comment_text4, CP_Comment_text5 are changed from 80 to 500 and the report can be run successfully.

SCR32496

Previously if comments contained a Max 80 characters including more than one \$ - placeholder (preferred name with Max 30 characters) and gave at least two such comments to the student, whose preferred name has 30 characters, the comment text lines on TAC004R would overlap. Now horizontal and vertical alignment property is changed for the fields CP_Comment_text2, CP_Comment_text3, CP_Comment_text4, CP_Comment_text5 so that they display properly without overlapping each other.

WPS002R.REP Report Card - Middle (WPS)

WPS001R.REP Report Card - Secondary (WPS)

SCR29001

Previously, the student's name and address did not fit in the window area of the Columbia #10 envelope. Now, in both the Middle and High School Report Cards, the student name and address are visible through the Columbia #10 envelope window.

YUM763R.REP Junior/Middle Report Card (YECC)

SCR32713 (YUM110405_1)

CRM Case No.1-14829

The Excused/Unexcused Absences of a student are now being displayed in the Junior/Middle Report Card (YUM763R). Authorized Absences are not included in this report.

SCR32724

CRM Case No.1-14841

Previously second semester courses were appearing on YUM763R when running the Report Card for 1st semester. Now, courses that have not yet started do not appear on the Report Card.

Attendance

Bugs

ATT005.FMX Daily Attendance - Class Entry

SCR32125

CRM Case No.1-13140

Previously marking a student as absent AM and PM, did not save the PM record. Now if you mark a student as absent for AM and PM, close the form and come back the record will be saved for AM and PM.

SCR32316

CRM Case No.1-13764

Previously changes on Daily Attendance - Class Entry were not saved correctly. Now Attendance entries or modifications on Daily Attendance - Class Entry screen are saving attendance records correctly.

SCR31945

CRM Case No.1-12557

The "Period Attendance - Class Entry" screen will show the Period number according to the Tumble Patterns for the school.

The course is not set up as multi-period course in the Course Section Maintenance screen (SCH070), but Tumble Patterns in the School "Current Year" screen (SYS040) are set up that for Day 1, course will be run in Period1, and then the same course will be run for Period 2 during the same day (for ex, DAY1: 11 33 55; DAY2: 22 44 66). "Period Attendance - Class Entry" screen will show P = 1, and next record will show P=2 for non multi-period class. If student is marked ABSENT for first period, he/she will be marked as ABSENT for second Period as well.

"Period Attendance - Student Absences" screen shows attendance information for all periods that were entered on "Period Attendance - Class Entry" screen.

ATT025.FMX Daily Attendance - Homeroom Class Entry

SCR30532

CRM Case No.1-10836

When clicking on the 'Alert' button for a student, previously you would receive a "win_message" box without any Alert information. Now, the alert displays correctly for each student.

ATT100.FMX Period Attendance - Mass Entry

SCR28361

Previously, when a user paused in the middle of the Period-Mass Entry records to enter a new record and save, the new record would be sorted and the cursor would follow the record to the newly sorted location, forcing the user to try to locate the last record they were at before saving.

Now, when pausing in the middle of the Period-Mass Entry records, entering a new record and saving, the cursor remains on the record saved, acting as a marker to show the user which was the last record handled and sorting occurs after the user exits the form.

SCR32370

CRM Case No.1-13888

Now: the course minutes at sec_attendances records are calculated correctly. The # of days, percentages for days present and days absent are now accurately calculating on ATT100R (Condensed Period Attendance Summary).

- The ATT150 (Period Attendance - Student Absences) is now reflecting the absences in the 'Total Pre/Mem Days' field correctly.
- The ATT120 (Period/Days Attendance Summaries - Days) is now reflecting Absences correctly.

ATT060.FMX Daily/Period Attendance - School Closings Entry**SCR32368**

An Oracle error is no longer generated using 10g runtimes.

ATT120.FMX Period/Days Attendance Summaries**SCR32569****CRM Case No.1-13358**

Previously when the Reasons radio button was selected on Attendance Summaries screen it showed an incorrect number of absences. Now when the Reasons radio button is chosen the total number of absences per day is correct as well as the number of absences on the same screen when the Days radio button is chosen. The Condensed Period Attendance Summary report generates the number of days absent according to the existing rule.

ATT140.FMX Period Attendance - Team/Club Entry**SCR29917 (L0956)****CRM Case No.1-12341**

Previously an Oracle error was generated after saving changes in the Period Attendance by team screen. Truncation Occurred; Value too large. The team size was increased to 9 digits.

SCR32272**CRM Case No.1-13516**

Previously, when a student was marked absent for a period (1) he/she would appear in green with a checkmark on Teams/groups entry even though different periods had been selected for the class trip. This would lead the user to believe that the student was absent for the whole day and he/she would not be attending the trip.

Now, when a student is marked absent for a period (1) he/she still shows on Teams/Groups screen but does not appear in green and with a checkmark.

ATT405.FMX Attendance Scanner Interface**SCR32395 (40168)****CRM Case No.1-13931**

The Update Database with Attendance function now has the following rules in place:

- If an attendance record already exists for a student where the Absent Code is null or not null and the Office Reason is not null when the update occurs, the system will update the Absent Code with a A\L\or null value. It will not remove the record since an Office Reason pre-existed.
- If an attendance record already exists for a student where the Absent Code is not null and the Office Reason is null and the NEW Absent Code from the scansheet is null, the system will remove the attendance record.
- If there are no pre-existing records for a student and the Absent Code is null from the scansheet, the system will not create any records in the sec_attedances table.

ATT405.FMX Attendance Scanner Interface**SCR32585****CRM Case No.110-14508**

The problem on re-scanning attendance entry sheet has been corrected.

SYS915.FMX IAM Attendance Import/Export**SCR32239**

An Oracle error is no longer generated using 10g runtimes.

Teacher Assistant Module

This document contains updates to forms and reports for optional modules. Please note that the *Teacher's Assistant Module* is purchased under a separate license from basic eSIS™ and only those clients who have purchased the *Teacher's Assistant Module* are authorized to use these forms and reports.

Path: *Navigate button (if NOT classroom Teacher) or upon login to eSIS*

Bugs

TAWSTART.FMX Teacher's Assistant Start Screen

TAW215.FMX Alerts/Follow-Up Observations

SCR32351

CRM Case No.1-13717

Performance has improved.

TAW900.FMX Attendance by Photo

SCR32315

CRM Case No.1-13789

Previously when two teachers from different schools/districts were taking attendance by photo and one teacher changed classes, the system locked. Now tthe system will commit a silent save when a class is changed for attendance and there is no system locking.

TAW930R.REP Observation Report (TA)

SCR32129

There was an error running TAW930R caused by an incorrect parameter width on the report. This has been fixed and the report TAW930R generates successfully through Teachers Assistant Module.

TAW910R.REP Academic Progress

TAW910RP.REP Progress Report Portrait

TAW911R.REP Progress Report

TAW911RP.REP Progress Report

TAW912R.rep v4.0.04.1

TAW912RP.REP Progress Report

TAW913R.REP Progress Report

TAW913RP.REP Progress Report

SCR32495

All the reports can now be generated from TAW910P.

FARMS Advanced Module

This document contains updates to forms and reports for optional modules. Please note that the *FARMS Advanced Module* is purchased under a separate license from basic eSIS™ and only those clients who have purchased the *FARMS Advanced Module* are authorized to use these forms and reports.

FARM12.FMX FARMS Applications Detail (Lite)

SCR31979

An Oracle error is no longer generated using 10g runtimes.

FARM180R.REP FARMS Notification Letters

SCR32420

The Version for the Farms Notification Letters report is now being updated.

Special Education Advanced

Special Education Late

Bugs

SED180.FMX Letter Selection

SCR32052

A FARMS letter is a letter that has a number of anywhere between 50 to 57 on the Letter Selection screen.

Previously, when a user tried to print a FARMS letter that was at the district level on the Letter Selection screen, a blank screen displayed and an error message would be displayed in the queue manager.

Now, the user is no longer allowed to create FARMS letters at the district level on the Letter Selection screen (SED180). This change allows the FARMS letters to properly display on the screen. If a user does try to enter a FARMS letter at the district level, a message will display stating "FARMS letters cannot be created at the District level." In addition, the Letter Conversion Utility screen (CON_SCRL) will not display FARMS letters.

SED900.FMX Special Education Lite

SCR31551

An Oracle error is no longer generated using 10g runtimes.

SCR32465

CRM Case No.1-14108

Read_only users can no longer select or add an eligibility for a student without an eligibility in the SED900 (Special Education Lite) screen. Read_only users can only read students with eligibility in the SPED Lite screen.

Special Education Advanced

This document contains updates to forms and reports for optional modules. Please note that the *Special Education Advanced Module* is purchased under a separate license from basic eSIS™ and only those clients who have purchased the *Special Education Advanced Module* are authorized to use these forms and reports.

SEW400.FMX Eligibility

SEW410.FMX Eligibility Detail-Autism Spectrum Disorder
SEW411.FMX Statement of Eligibility-Speech/Lang Impairment
SEW412.FMX Statement of Eligibility-Deaf/Blindness
SEW413.FMX Statement of Eligibility-Emotional Disturbance
SEW414.FMX Statement of Eligibility-Hearing Impairment
SEW415.FMX Statement of Eligibility-Specific Learning Disability
SEW416.FMX Statement of Eligibility-Mental Retardation
SEW417.FMX Statement of Eligibility-Other Health Impairment
SEW418.FMX Statement of Eligibility-Orthopedic Impairment
SEW419.FMX Statement of Eligibility-Traumatic Brain Injury
SEW420.FMX Statement of Eligibility-Visual Impairment
SEW410P.FMX Eligibility Detail-Autism-Spectrum Disorder
SEW410R.REP Eligibility Detail-Autism-Spectrum Disorder
SEW411R.REP Statement of Eligibility-Speech/Lang Impairment
SEW412R.REP Statement of Eligibility-Deaf/Blindness
SEW413R.REP Statement of Eligibility-Emotional Disturbance
SEW414R.REP Statement of Eligibility-Hearing Impairment
SEW415R.REP Statement of Eligibility-Specific Learn Disability
SEW416R.REP Statement of Eligibility-Mental Retardation
SEW417R.REP Statement of Eligibility-Specific Learn Disability
SEW418R.REP Statement of Eligibility-Orthopedic Impairment
SEW419R.REP Statement of Eligibility-Traumatic Brain Injury
SEW420R.REP Statement of Eligibility-Visual Impairment

Enhancement

SCR28451

A new date input field "Current Eligibility Date" was added to each of the forms on the last tab of each form. The date entered in this field will now print under Date in the upper right hand corner of the associated report for that form. (It should be noted that prior to this enhancement, the date that printed in this field was the date of the evaluation.). See the Oregon Special Ed document.

SCR32269

Changes were made to the Wisconsin State Report ISES according to the Phase II specification.

SEW504.FMX Process Management Timelines

Bug

SCR32243

An Oracle error is no longer generated using 10g runtimes.

Appendix A – GPA Calculation after Quarter 3

The GPA module allows a special GPA calculation after Quarter 3 (interim marks) have been posted to allow multiple marks from the same course length to be weighted and included in the Cumulative GPA – including Courses In Progress calculation in the GPA Module.

Note: This calculation helps in the determination of senior who meet special recognition diplomas according to their GPA standing after the third Quarter marks have been posted.

The Cumulative GPA includes marks from the following areas:

- Final Marks for courses in Credit History from Grades 9-12
- Final Marks for completed courses for current year course selections.
- Non-Final Marks for courses still in progress

In order to capture marks for a student for the three areas mentioned above, use the “Cumulative including Courses In Progress” GPA Type Calculation in the GPA Module.

This choice will allow you to select multiple marks for a course in progress by allowing you to assign multiple existing reporting periods for the same course length (i.e. 36 weeks) to be attached to a single school reporting date and would designate multiple reporting periods as GPA Marks (alternate final marks). You can weight each reporting period accordingly.

Allow multiple marks to be included in GPA calculation for the same course length

Note: Only valid for “Cumulative including Courses in Progress” GPA Type Calculations

1. Navigate to the Company File > Courses Tab (SYS001).
2. Check ON the “Allow multiple marks to be included in the GPA Calculation for the same course length” indicator
3. Press the SAVE button.
 - If the option is checked ON, then COMPANY.GPA_MULTI_MARKS_PER_LENGTH_IND = Y.
 - If the option is unchecked OFF: The system checks all schools associated to the Company Key for multiple report cycles with the same course length (where the ALT_FINAL_IND is set to Yes) attached to a single School Reporting Date (SCHOOL_REPORTING_DATES and SCHOOL_REPORTING_DATE_CYCLES tables)

If found, a Hard Stop prompt displays.

NOTE: You will not be allowed to disable the indicator if there are multiple reporting periods of the same course length that are set to be included in the GPA calculation (Alt Final Indicator = Yes) attached to a single School Reporting Date)

Otherwise, sets the COMPANY.GPA_MULTI_MARKS_PER_LENGTH_IND = N.

EXAMPLE:

The school has the following reporting periods set up for a 36-week (year-long) course in SCH100 – Reporting Periods:

Carla's Test HI District Student Information System

Reporting Periods

School: 4231 Carla's Test HI School

Course Length: 36 weeks Start Date: 01-SEP-1999

	Long Name	Short Name	End Date	Mark Calculation	Final Mark? Exam	Multi Sem. Final	Marking Start Date
1	Quarter 1	Q1	15-NOV-1999	Mark Entry	No		
2	Quarter 2	Q2	31-JAN-2000	Mark Entry	No		
3	Semester 1	S1	31-JAN-2000	Mark Entry	No		
4	Quarter 3	Q3	15-APR-2000	Mark Entry	No		
5	Quarter 4	Q4	30-JUN-2000	Mark Entry	No		
6	Semester 2	S2	30-JUN-2000	Mark Entry	No		
7	Year	YR	30-JUN-2000	Mark Entry	Yes		
8	Mid-Quarter 1	M1	15-NOV-1999	Mark Entry	No		
9	Mid-Quarter 2	M2	01-JAN-2000	Mark Entry	No		
10	Mid-Quarter 3	M3	31-JAN-2000	Mark Entry	No		
11	Mid-Quarter 4	M4	01-APR-2000	Mark Entry	No		

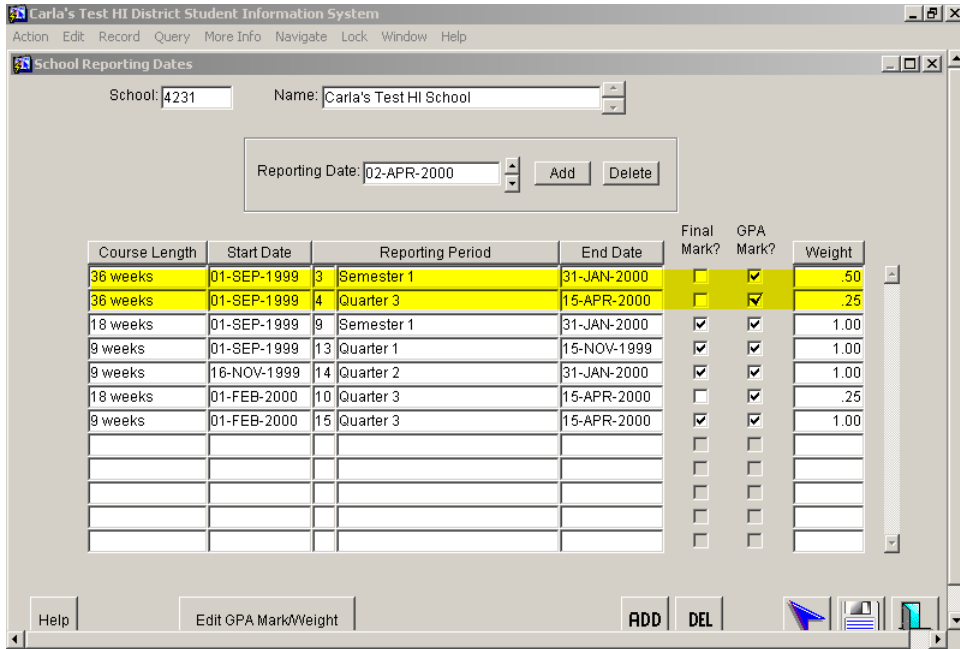
Display school name: Record: 1/1 <OSC> <DBG>

After posting the third quarter marks, set up a School Reporting Date in the GPA Module and attach the following reporting periods and designate them as “GPA Mark?” (alternate final mark):

NOTE:

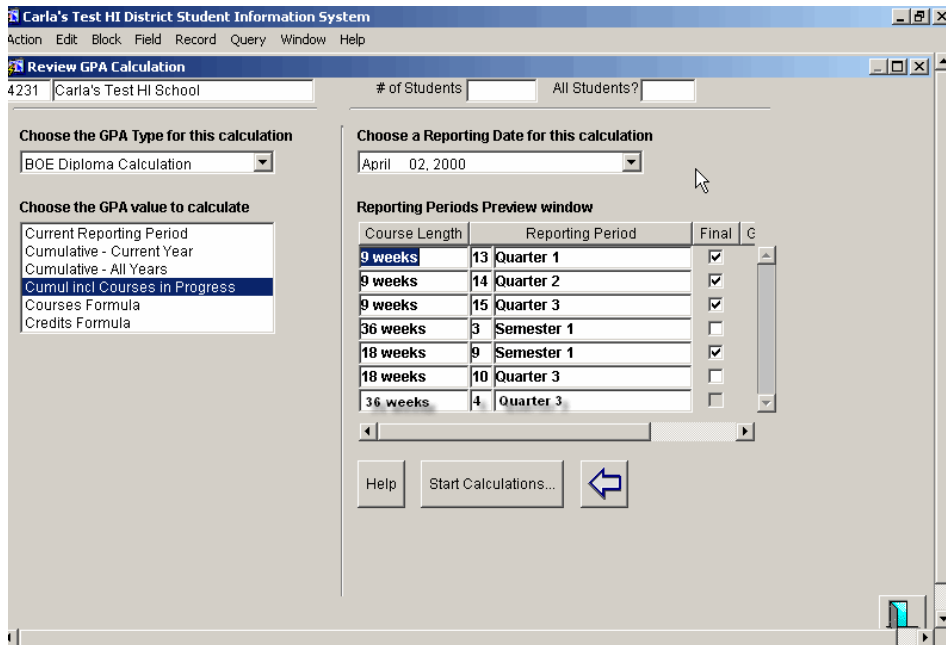
There are two reporting periods designated as “GPA Mark?” for 36-week (year-long) courses (highlighted in yellow).

- The Semester 1 reporting period is weighted 0.50 because it represents the student’s cumulative effort half-way through the course.
- The Quarter 3 reporting period is weighted 0.25 because it represents the student’s cumulative effort for a quarter of the course.



END RESULT:

When you run the "Cumulative including Courses in Progress" GPA Type Calculation for this School Reporting Date, the system includes the student's marks from both of the reporting periods (weighted accordingly).



Setting up a Report Date with Multiple Reporting Periods for the Same Course Length on SCH102.

Preconditions

- School has been selected (SYS100)
- Reporting Periods have been set-up for the selected school (SCH100).
- Company File>Courses Tab – “Allow multiple marks to be included in the GPA calculation for same course length” indicator is turned ON.

1. Navigate to the GPA Module (SCH121).
2. Click the “School Reporting Dates” button. School Reporting Dates screen (SCH102) displays.
3. Click the “ADD” button for Reporting Date and enters a date. System checks School Details (SYS040) to determine whether the selected school has “Use Standard Reporting Days” turned ON.
 - If “Use Standard Reporting Days” is turned ON, the system will validate that the date the user entered exists in the “Standard Reporting Dates” system table (SYS595).
 - If the date does not exist, then the system will prompt the user to select a date from the “Standard Reporting Dates” list of values (pulled from the “Standard Reporting Dates” System Code Table (SYS595)) Otherwise, if the “Use Standard Reporting Days” is turned OFF, the system allows you to manually enter any date.
4. Click the “ADD” button to add a reporting period to the Reporting Date.
5. Select a Course Length, Start Date and Reporting Period from the dropdown lists. System checks the Company File to determine whether the “Allow multiple marks to be included in the GPA calculation for same course length” indicator has been turned ON.
 - If the indicator is turned ON, the system will NOT validate whether a reporting period with the same course length has already been added to the Reporting Date. (NOTE: The “Include mark in current reporting period GPA” and “Weight when used as Alternate Final” checkboxes will be enabled.)
6. Check ON the “Include mark in current reporting period GPA” checkbox and optionally enters a “Weight when used as Alternate Final” (if left NULL, then weight = 1 when calculating GPA).
7. Click SAVE.

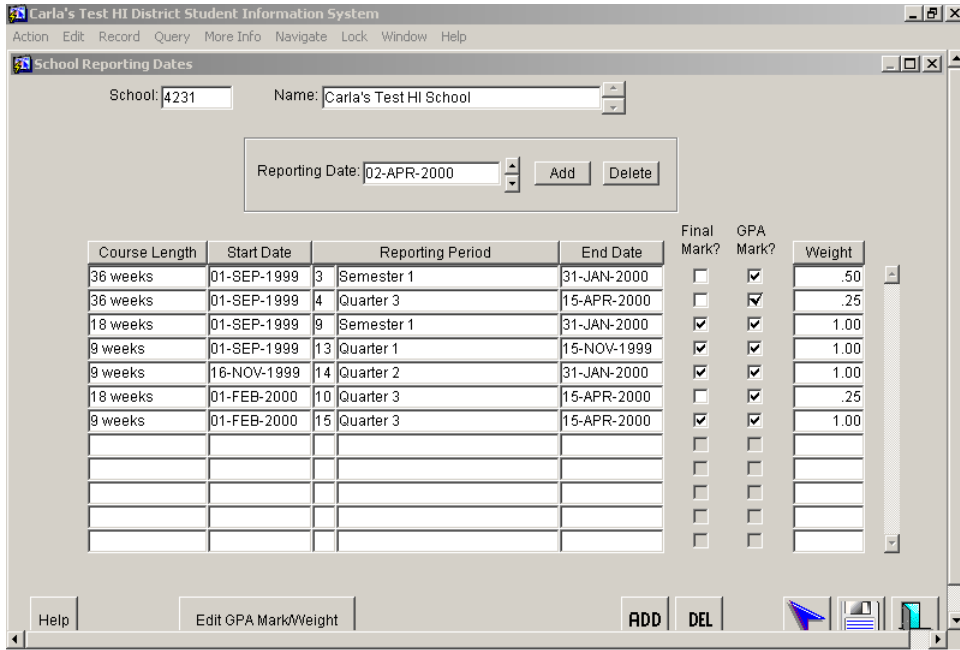
Running “Cumulative including Courses in Progress” GPA for Reporting Date with Multiple Reporting Periods for the same course length

Preconditions

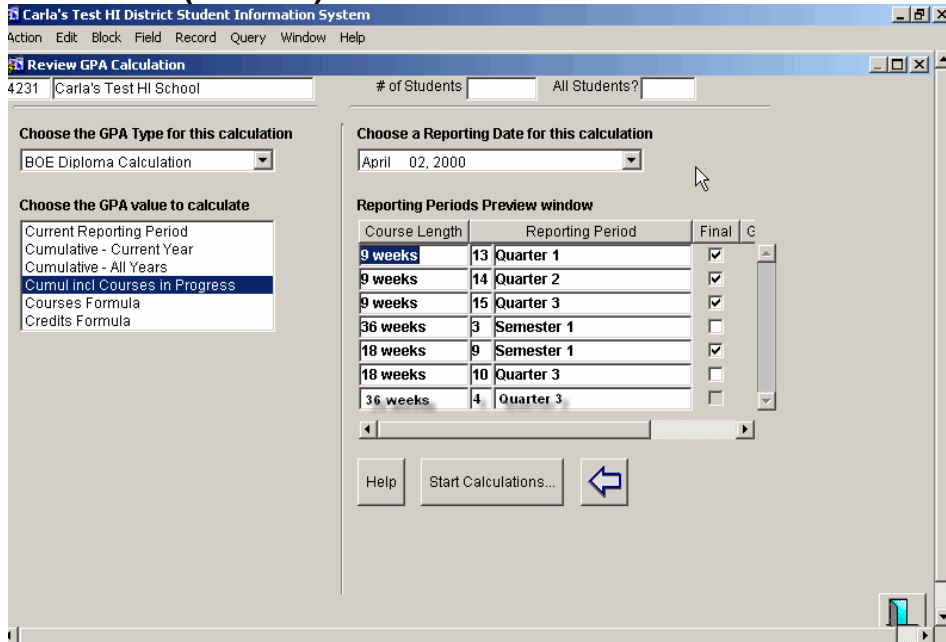
- School has been selected (SYS100)
 - GPA Reporting Dates have been set-up for the selected school (SCH102)
 - GPA Type Criteria has been set-up for the selected school (SCH103)
1. Navigate to the GPA Module (SCH121).
 2. Click the “Run GPA Calculation” button.
 3. Click the “Add New GPA” button. System navigates to “Review GPA Calculation” screen (SCH104).
 4. Select the GPA Type Criteria to be used from the dropdown list.
 5. Select the School Reporting Date to be used from the dropdown list where there are multiple reporting periods for the same course length that have “GPA Mark?” set to YES.
 6. Select “Cumul incl Courses in Progress” GPA Calculation Type from the list.
 7. Click “Start Calculations” button. System navigates to the Demographic Extract Criteria screen.
 8. Select the students to include in the GPA Calculation and clicks the “Run” button. System calculates the Cumulative GPA including Courses in Progress for the selected students, selected GPA Type Criteria and selected reporting periods. When the system completes the calculations, the system will navigate to the “Review GPA Calculation” screen (SCH104) and populate the “# of Students” and “All Students?” fields.
 9. Click the “PREV” (arrow) button. System navigates to the “Review Calculated GPAs” screen (SCH104) and refreshes the list with the newly calculated GPA run.

School Reporting Dates Changes (SCH102)

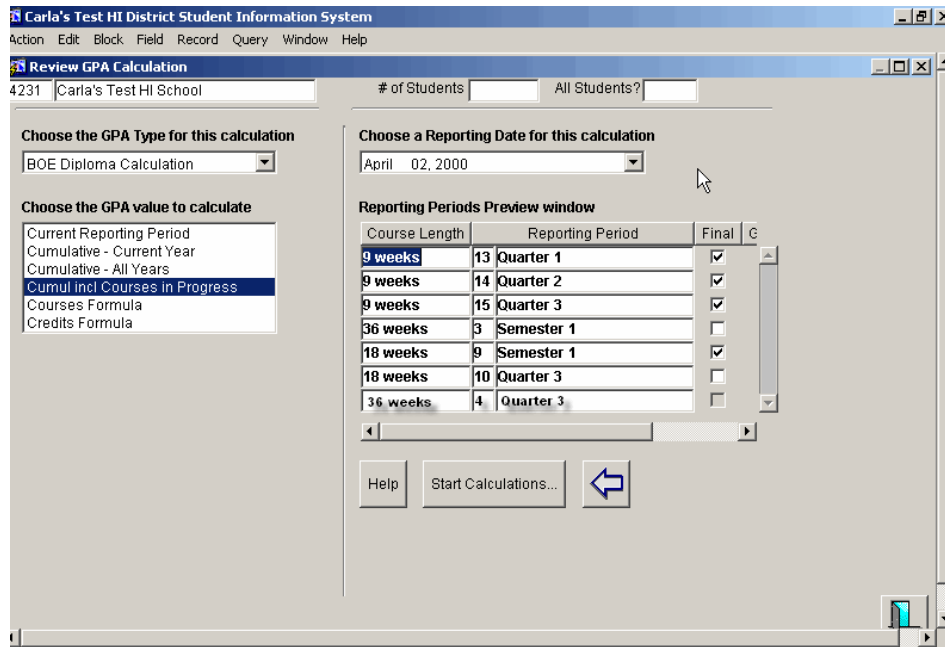
You can only assign multiple reporting periods of the same course length as Alternate Finals (GPA Mark? is set to YES) to a single Reporting Date if the company file option “Allow multiple marks to be included in GPA calculation for the same course length” is set to YES.



GPA Calculations (SCH104)



You can only run “Cumulative GPA including Courses In Progress” GPA Type Calculations for a Reporting Date that contains multiple reporting periods for the same course length where the “GPA Mark?” is set to YES.



Messages

Message Type	Text	How Invoked?
Hard Stop	This option cannot be disabled because there are School Reporting Dates set up containing multiple reporting periods for the same course length where the Alternate Final Indicator is set to yes. OK	User checks OFF the “Allow multiple marks to be included in the GPA Calculation for the same course length” indicator in the Company File but there is at least one school associated to the Company Key that has set up a School Reporting Date in the GPA Module with multiple report cycles with the same course length (where the ALT_FINAL_IND is set to Yes).
Hard Stop	The reporting date selected contains multiple reporting periods for the same course length where the Alternate Final Indicator is set to yes. The only GPA Calculation Type that can be used with this reporting date is “Cumul incl Courses In Progress”. OK	User selects a School Reporting Date with multiple reporting periods for the same course length where the Alternate Final Indicator is set to yes and selects a GPA Calculation Type that is NOT “Cumulative including Courses in Progress” (such as Current Reporting Period, Cumulative – Current Year, or Cumulative – All Years, Courses Formula, Credits Formula).

Index

ADC450P.FMX, 54
 ADC450R.REP, 54
 ADH040.FMX, 19
 ATT005.FMX, 73
 ATT025.FMX, 73
 ATT035R.REP, 45
 ATT060.FMX, 74
 ATT100.FMX, 73
 ATT101R.REP, 45
 ATT120.FMX, 74
 ATT140.FMX, 74
 ATT370R.REP, 45
 ATT400P.FMX, 45
 ATT405.FMX, 74
 ATT421R.REP, 45
 ATT510P.FMX, 45
 ATT601P.FMX, 45
 ATT801R.REP, 46
 BLP001R.REP, 54
 BLP454R.REP, 55
 BPS800R.REP, 55
 CODES.FMX, 12
 CODESP.FMX, 13, 15
 CODESR_A.REP, 13, 14, 15
 CODESR_C.REP, 15
 CODESR_F.REP, 13
 CODESR_HI.REP, 14
 CODESR_IA.REP, 14
 CODESR_M.REP, 13, 14, 15
 CODESR_MR.REP, 13, 15
 CODESR_P.REP, 72
 CODESR_SF.REP, 14
 CODESR_SP.REP, 14
 CODESR_ST.REP, 14
 CODESR_T.REP, 14
 CODESR_TA.doc, 12
 CODESR_TA.REP, 14
 CON_SCRL.FMX, 15
 COP140P.FMX, 46
 CS error.doc, 12
 DCPS01P.FMX, 55
 DCPS454P.FMX, 56
 DCPS454R.REP, 56
 DMOEXT.FMX, 46
 EMIS191.FMX, 57
 EXP010.FMX, 49
 FARM12.FMX, 76
 FARM180R.REP, 76
 FROCR10R.REP, 49
 FROCR11R.REP, 49
 FROCR12R.REP, 49
 FROCR13R.REP, 49
 FROCR14R.REP, 49
 FROCR15R.REP, 49
 FROCR16R.REP, 49
 FROCR7R.REP, 49
 FROCR8R.REP, 49
 FROCR9R.REP, 49
 MAS010.FMX, 32
 MAS020.FMX, 32
 MAS030.FMX, 32
 MAS040.FMX, 32
 MAS050.FMX, 32
 MAS060.FMX, 32
 MRBC002.FMX, 58
 MTB025.FMX, 26
 MTBSTART.FMX, 26
 NC450R.REP, 58
 NC450RB.REP, 58
 OL_SR_PFORM, 58
 ONT470P.FMX, 58
 ONT470R.REP, 58
 PI010.FMX, 33
 SCH015.FMX, 32
 SCH021R.REP, 49
 SCH030.FMX, 22
SCH049.FMX, 42
 SCH050.FMX, 23
 SCH070.FMX, 23
 SCH097.FMX, 23
 SCH100.FMX, 22
 SCH102.FMX, 26
 SCH103.FMX, 26, 27
 SCH104.FMX, 26, 30
 SCH104R.REP, 49
 SCH111P.FMX, 49
 SCH133.FMX, 26
 SCH175.FMX, 25
 SCH200.FMX, 23
 SCH215.FMX, 22
 SCH330.FMX, 26, 30, 31
 SCH420R.REP, 50
 SCH421P.FMX, 50
 SCH421R.REP, 50
 SCH603R.REP, 68
 SCH605R.REP, 59
 SCH606R.REP, 59
 SCH613R.REP, 59
 SCH613R.REP, 59
 SCH615R.REP, 59
 SCH618R.REP, 59
 SCH665R.REP, 59

SCR15079, 23
SCR15201, 32
SCR15230, 18
SCR15256, 32
SCR19221, 33
SCR20578, 22
SCR21659, 34
SCR21705, 33, 42
SCR22396, 16
SCR22670, 37
SCR22671, 46
SCR22676, 47, 51
SCR22999, 61
SCR23922, 33
SCR23976, 27
SCR24663, 7, 20, 22, 26, 27, 49
SCR25712, 43
SCR26019, 66
SCR26237, 8, 21, 31
SCR26312, 9
SCR26356, 69
SCR26423, 62
SCR27317, 41
SCR27335, 62
SCR27349, 22
SCR27428, 33
SCR27432, 33
SCR27523, 7, 20, 30
SCR27881, 54
SCR27945, 26
SCR28276, 36
SCR28361, 73
SCR28444, 62
SCR28451, 78
SCR28535, 12, 16, 23, 34, 35, 43, 50
SCR28584, 71
SCR28714, 34
SCR28864, 45
SCR28943, 48
SCR29001, 72
SCR29017, 23
SCR29032, 15
SCR29033, 13
SCR29035, 14
SCR29065, 13
SCR29069, 13
SCR29102, 13
SCR29116, 13
SCR29119, 13
SCR29170, 13
SCR29176, 53
SCR29180, 12
SCR29182, 25
SCR29250, 68
SCR29335, 34
SCR29381, 44
SCR29414, 71
SCR29565, 50
SCR29633, 67
SCR29636, 67
SCR29714, 18
SCR29795, 68
SCR29884, 71
SCR29898, 50
SCR29917, 74
SCR29961, 34
SCR29981, 36
SCR29997, 33
SCR30084, 32
SCR30097, 72
SCR30159, 35
SCR30160, 34
SCR30242, 23
SCR30252, 71
SCR30376, 35
SCR30450, 25
SCR30459, 15
SCR30470, 19
SCR30482, 71
SCR30483, 45
SCR30506, 44
SCR30516, 59
SCR30526, 15
SCR30532, 73
SCR30539, 60
SCR30540, 60
SCR30552, 60
SCR30796, 37
SCR30847, 26
SCR30995, 32
SCR31038, 22
SCR31050, 34
SCR31083, 34
SCR31097, 58
SCR31201, 49
SCR31310, 12
SCR31399, 68
SCR31403, 48
SCR31426, 36, 37
SCR31441, 42
SCR31453, 37
SCR31465, 13
SCR31497, 67
SCR31499, 65
SCR31541, 60
SCR31551, 77
SCR31577, 56
SCR31581, 43
SCR31588, 35
SCR31593, 69
SCR31596, 24
SCR31771, 55

SCR31884, 24
SCR31885, 24
SCR31945, 73
SCR31955, 45
SCR31970, 61
SCR31974, 61
SCR31979, 76
SCR31980, 56
SCR31981, 71
SCR31985, 54
SCR31988, 12
SCR32004, 62
SCR32009, 53
SCR32035, 24
SCR32048, 43
SCR32050, 69
SCR32052, 77
SCR32059, 55
SCR32061, 24
SCR32072, 71
SCR32076, 55
SCR32103, 9, 12
SCR32109, 19
SCR32110, 32
SCR32111, 53
SCR32112, 67
SCR32125, 73
SCR32129, 75
SCR32133, 26
SCR32156, 46
SCR32157, 24
SCR32164, 36
SCR32165, 58
SCR32168, 58
SCR32171, 64
SCR32174, 53
SCR32175, 25
SCR32178, 26
SCR32190, 53
SCR32199, 60
SCR32209, 59
SCR32225, 57
SCR32236, 49
SCR32239, 74
SCR32241, 19
SCR32243, 78
SCR32246, 50
SCR32247, 23
SCR32272, 74
SCR32296, 71
SCR32312, 55
SCR32315, 75
SCR32316, 73
SCR32317, 23
SCR32321, 58
SCR32325, 69
SCR32326, 67
SCR32328, 12
SCR32340, 61
SCR32344, 67
SCR32351, 75
SCR32352, 66
SCR32354, 67
SCR32357, 56
SCR32360, 64
SCR32363, 57
SCR32367, 66
SCR32368, 74
SCR32369, 57
SCR32370, 73
SCR32371, 45
SCR32372, 64
SCR32384, 25
SCR32388, 70
SCR32389, 45
SCR32390, 68
SCR32395, 74
SCR32398, 56
SCR32399, 49
SCR32405, 64
SCR32407, 67
SCR32411, 43
SCR32413, 64
SCR32418, 69
SCR32420, 76
SCR32423, 57
SCR32426, 70
SCR32427, 45
SCR32428, 68
SCR32431, 70
SCR32434, 45
SCR32444, 58
SCR32455, 69
SCR32459, 66
SCR32461, 65
SCR32462, 70
SCR32465, 77
SCR32473, 25, 50, 53
SCR32477, 36
SCR32481, 72
SCR32484, 58
SCR32486, 70
SCR32487, 71
SCR32488, 58
SCR32493, 57
SCR32495, 75
SCR32496, 72
SCR32512, 69
SCR32517, 70
SCR32521, 67
SCR32522, 66
SCR32534, 59

SCR32536, 66
SCR32537 (534), 54
SCR32541, 57
SCR32543, 64
SCR32544, 50
SCR32547, 68
SCR32554, 66
SCR32557, 58
SCR32560, 65
SCR32563, 70
SCR32569, 74
SCR32575, 25
SCR32578, 70
SCR32580, 68
SCR32585, 74
SCR32586, 56
SCR32587, 56
SCR32589, 60
SCR32591, 62
SCR32592, 42
SCR32593, 68
SCR32594, 57
SCR32595, 43
SCR32601, 55
SCR32611, 69
SCR32618, 53
SCR32622, 49
SCR32626, 19
SCR32640, 15
SCR32656, 54
SCR32657, 66
SCR32659, 59
SCR32671, 63
SCR32679, 69
SCR32693, 63
SCR32713, 72
SCR32716, 57
SCR32724, 72
SCR32730, 66
SCR32748, 63
SCR32752, 67
 SED180.FMX, 77
 SED900.FMX, 77
 SETUP.FMX, 12
 SEW400.FMX, 78
 SEW410.FMX, 78
 SEW410P.FMX, 78
 SEW410R.REP, 50, 78
 SEW411.FMX, 78
 SEW411R.REP, 78
 SEW412.FMX, 78
 SEW412R.REP, 78
 SEW413.FMX, 78
 SEW413R.REP, 78
 SEW414.FMX, 50, 78
 SEW414R.REP, 50, 78
 SEW415.FMX, 78
 SEW415R.REP, 78
 SEW416.FMX, 78
 SEW416R.REP, 78
 SEW417.FMX, 78
 SEW417R.REP, 78
 SEW418.FMX, 78
 SEW418R.REP, 78
 SEW419.FMX, 78
 SEW419R.REP, 78
 SEW420.FMX, 78
 SEW420R.REP, 78
 SEW504.FMX, 78
 SEWBV04P.FMX, 59
 SEWBV890.FMX, 61
 SEWCODES.FMX, 62
 SEWOH20P.FMX, 60
 SEWOH30.FMX, 60
 SEWOH60R.REP, 60
 SEWOH70.FMX, 60
 SEWOR50.FMX, 61
 SEWOR50R.REP, 61
 SEWOR55.FMX, 61
 SEWOR60.FMX, 61
 SEWOR66.FMX, 62
 SEWOR70.FMX, 61
 SEWOR91.FMX, 62
 SEWOR92.FMX, 62
 SEWWP70.FMX, 62
 SISRPTS.FMX, 50
 SLC001P.FMX, 62
 SLC001R.REP, 62
 SR0H040.FMX, 67
 SRAZ001.FMX, 63
 SRFL070.FMX, 64
 SRFL165.FMX, 64
 SRFLCS1.FMX, 65
 SRFLDFFC.FMX, 66
 SRFLDSET.FMX, 66
 SRFLFAST.FMX, 64
 SRFLFDPE.FMX, 66
 SRFLSC.FMX, 64, 66
 SRFLSTU1.FMX, 66
 SRIA001P.FMX, 66
 SRIA002P.FMX, 66
 SRIA010.FMX, 67
 SRIL001P.FMX, 67
 SRIL004R.FMX, 67
 SRIL300P.FMX, 67
 SRIL442R.REP, 67
 SRILI001R.REP, 67
 SRKS002.FMX, 67
 SRKSMIS1.FMX, 67
 SRON104R.REP, 68
 SRON175P.FMX, 68
 SROR030P.FMX, 68

SROR104P.FMX, 68
SROR105P.FMX, 69
SROR125P.FMX, 69
SROR211R.REP, 69
SROR220P.FMX, 69
SROR250P.FMX, 69
SROR250R.REP, 69, 70
SROR251R.REP, 70
SROR900.FMX, 68
SROR905.FMX, 70
SRUT001P.FMX, 70
SRVA001P.FMX, 71
SRWA501.FMX, 71
SRWA548P.FMX, 71
SRWA548R.REP, 71
SRWI006P.FMX, 71
STU001.FMX, 35
STU030.FMX, 43
STU039.FMX, 23
STU057.FMX, 43
STU105.FMX, 33
STU115.FMX, 42
STU129.FMX, 42
STU160.FMX, 35
STU164.FMX, 35
STU170.FMX, 44
STU180.FMX, 51
STU180P.FMX, 51
STU180R.REP, 51
STU181R.REP, 53
STU190.FMX, 24
STU195.FMX, 24
STU196.FMX, 24
STU199.FMX, 24
STU230.FMX, 25
STU232P.FMX, 53
STU260.FMX, 71
STU275R.REP, 53
STU315R.REP, 53
STU407R.REP, 53
STU436P.FMX, 49
STU541.FMX, 34
STU544.FMX, 43
STU552.FMX, 37, 41
STU554.FMX, 37
STU555.FMX, 37
STU560.FMX, 12
STU571.FMX, 41
STU622.FMX, 72
STU645.FMX, 43
STU710P.FMX, 53
STU751R.REP, 71
STU840R.REP, 53
SYS001.FMX, 7
SYS021.FMX, 12
SYS040.FMX, 20
SYS050.FMX, 9
SYS155.FMX, 15
SYS156.FMX, 15
SYS171.FMX, 19
SYS265.FMX, 16
SYS268.FMX, 19
SYS515R.REP, 54
SYS585.FMX, 22
SYS603.FMX, 72
SYS656.FMX, 19
SYS660.FMX, 16
SYS915.FMX, 74
SYS960.FMX, 12
SYS985.FMX, 72
TAC004R.REP, 72
TAW215.FMX, 75
TAW900.FMX, 75
TAW910R.REP, 75
TAW910RP.REP, 75
TAW911R.REP, 75
TAW911RP.REP, 75
TAW912R.REP, 75
TAW912RP.REP, 75
TAW913R.REP, 75
TAW913RP.REP, 75
TAW930R.REP, 75
TAWSTART.FMX, 75
WPS002R.REP, 72
YUM763R.REP, 72